

For Research Use Only

# GALM Recombinant monoclonal antibody

Catalog Number: 86369-1-RR



## Basic Information

Catalog Number:

86369-1-RR

Source:

Rabbit

Isotype:

IgG

Immunogen Catalog Number:

AG8842

GenBank Accession Number:

BC019263

GeneID (NCBI):

130589

UNIPROT ID:

Q96C23

Full Name:

galactose mutarotase (aldose 1-epimerase)

Calculated MW:

342 aa, 38 kDa

Observed MW:

38 kDa

Purification Method:

Protein A purification

CloneNo.:

251049A8

Recommended Dilutions:

WB: 1:2000-1:10000

## Applications

Tested Applications:

WB, ELISA

Species Specificity:

human, mouse, rat

Positive Controls:

WB : HeLa cells, HepG2 cells, SK-N-SH cells, SH-SY5Y cells, mouse kidney tissue, rat kidney tissue

## Background Information

GALM, also named as Aldose 1-epimerase, belongs to the aldose epimerase family. GALM is a mutarotase that catalyzes the interconversion of beta-D-galactose and alpha-D-galactose during galactose metabolism. GALM is involved in the maintenance of the equilibrium between the beta- and alpha-anomers of galactose, therefore ensuring a sufficient supply of the alpha-anomer for GALK1. GALM is also active on D-glucose, but its preference for galactose is higher than that of glucose. The calculated molecular weight of GALM is 38 kDa.

## Storage

Storage:

Store at -20°C. Stable for one year after shipment.

Storage Buffer:

PBS with 0.02% sodium azide and 50% glycerol, pH7.3

Aliquoting is unnecessary for -20°C storage

For technical support and original validation data for this product please contact:

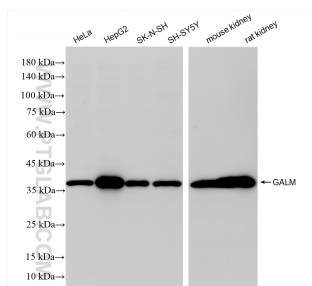
T: 4006900926

E: [Proteintech-CN@ptglab.com](mailto:Proteintech-CN@ptglab.com)

W: [ptgcn.com](http://ptgcn.com)

This product is exclusively available under Proteintech Group brand and is not available to purchase from any other manufacturer.

## Selected Validation Data



Various lysates were subjected to SDS PAGE followed by western blot with 86369-1-RR (GALM antibody) at dilution of 1:5000 incubated at room temperature for 1.5 hours.