

For Research Use Only

BCAT2 Recombinant antibody, PBS Only

Catalog Number: 86367-1-PBS



Basic Information

Catalog Number:

86367-1-PBS

Concentration:

1000 µg/ml

Source:

Rabbit

Isotype:

IgG

Immunogen Catalog Number:

AG9573

GenBank Accession Number:

BC001900

GeneID (NCBI):

587

UNIPROT ID:

O15382

Full Name:

branched chain aminotransferase 2,
mitochondrial

Calculated MW:

44 kDa

Observed MW:

38 kDa

Purification Method:

Protein A purification

CloneNo.:

251057E6

Applications

Tested Applications:

WB, IHC, Indirect ELISA

Species Specificity:

human, mouse, rat

Background Information

Branched-chain amino acid transaminase 2 (BCAT2) is an important enzyme in branched-chain amino acids (BCAAs) catabolism that reversibly catalyzes the initial step of BCAA degradation to branched-chain acyl-CoA. In humans, BCAT2 encodes a mitochondrial protein that is ubiquitously expressed in all organs (except hepatocytes) (PMID:32467562). Moreover, other reports showed that overexpressed BCAT2 in pancreatic ductal adenocarcinoma (PDAC) cells enhanced cell proliferation and survival in vitro and in vivo (PMID:35663242).

Storage

Storage:

Store at -80°C.

The product is shipped with ice packs. Upon receipt, store it immediately at -80°C

Storage Buffer:

PBS only, pH7.3

For technical support and original validation data for this product please contact:

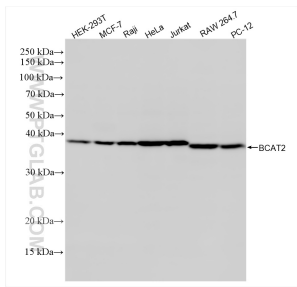
T: 4006900926

E: Proteintech-CN@ptglab.com

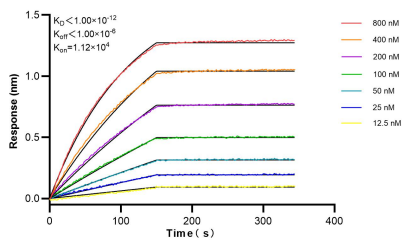
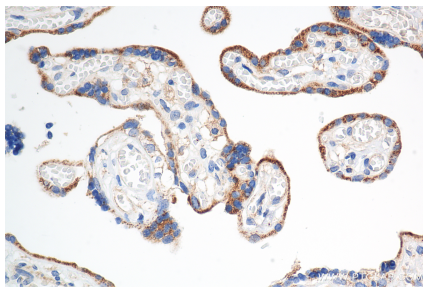
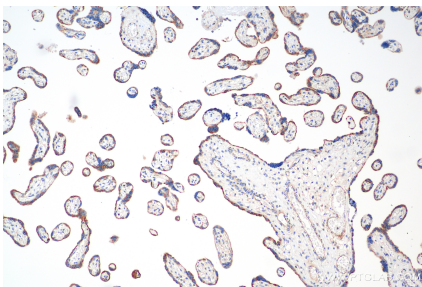
W: ptgcn.com

This product is exclusively available under Proteintech Group brand and is not available to purchase from any other manufacturer.

Selected Validation Data



Various lysates were subjected to SDS PAGE followed by western blot with 86367-1-RR (BCAT2 antibody) at dilution of 1:10000 incubated at room temperature for 1.5 hours. This data was developed using the same antibody clone with 86367-1-PBS in a different storage buffer formulation.



Biolayer interferometry (BLI) kinetic assays of 86367-1-RR against Human BCAT2 were performed. The affinity constant is below 1 pM.