

For Research Use Only

# HLTF Recombinant monoclonal antibody, PBS Only

Catalog Number: 86362-2-PBS



## Basic Information

Catalog Number:

86362-2-PBS

Concentration:

1000 µg/ml

Source:

Rabbit

Isotype:

IgG

Immunogen Catalog Number:

AG5596

GenBank Accession Number:

BC044659

GeneID (NCBI):

6596

UNIPROT ID:

Q14527

Full Name:

helicase-like transcription factor

Calculated MW:

114 kDa

Observed MW:

114 kDa

Purification Method:

Protein A purification

CloneNo.:

251000A4

## Applications

Tested Applications:

WB, Indirect ELISA

Species Specificity:

human, mouse, monkey

## Background Information

Helicase-like Transcription Factor (HLTF) is a crucial nuclear protein and member of the SWI/SNF family of chromatin-remodeling complexes, playing a dual role in transcription regulation and DNA damage repair. It functions dually as a regulator of gene expression, utilizing its ATP-dependent helicase activity to modify chromatin structure and facilitate transcription, and as a central effector in the DNA damage response pathway. HLTF is particularly crucial for promoting error-free DNA repair at stalled replication forks via a mechanism called template switching, which prevents the accumulation of mutagenic lesions. HLTF can be detected as 114 kDa.

## Storage

Storage:

Store at -80°C.

The product is shipped with ice packs. Upon receipt, store it immediately at -80°C

Storage Buffer:

PBS only, pH7.3

For technical support and original validation data for this product please contact:

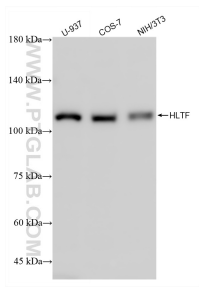
T: 4006900926

E: [Proteintech-CN@ptglab.com](mailto:Proteintech-CN@ptglab.com)

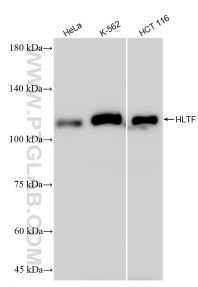
W: [ptgcn.com](http://ptgcn.com)

This product is exclusively available under Proteintech Group brand and is not available to purchase from any other manufacturer.

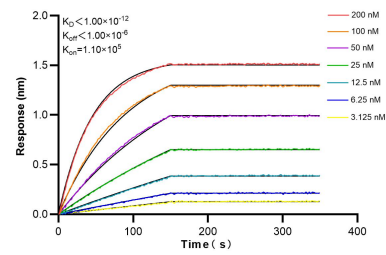
## Selected Validation Data



Various lysates were subjected to SDS PAGE followed by western blot with 86362-2-RR (HLTf antibody) at dilution of 1:10000 incubated at room temperature for 1.5 hours. This data was developed using the same antibody clone with 86362-2-PBS in a different storage buffer formulation.



Various lysates were subjected to SDS PAGE followed by western blot with 86362-2-RR (HLTf antibody) at dilution of 1:10000 incubated at room temperature for 1.5 hours. This data was developed using the same antibody clone with 86362-2-PBS in a different storage buffer formulation.



Biolayer interferometry (BLI) kinetic assays of 86362-2-RR against Human HLTf were performed. The affinity constant is below 1 pM.