

For Research Use Only

# OXR1 Recombinant antibody, PBS Only (Detector)

Catalog Number: 86359-1-PBS



## Basic Information

Catalog Number: 86359-1-PBS	GenBank Accession Number: BC032710	Purification Method: Protein A purification
Concentration: 1 mg/ml	GeneID (NCBI): 55074	CloneNo.: 251027G6
Source: Rabbit	UNIPROT ID: Q8N573	
Isotype: IgG	Full Name: oxidation resistance 1	
Immunogen Catalog Number: AG4439	Calculated MW: 758 aa, 85 kDa	

## Applications

**Tested Applications:**  
Cytometric bead array, Sandwich ELISA, Indirect ELISA,  
Sample test

**Species Specificity:**  
human

## Background Information

### Storage

**Storage:**  
Store at -80°C.  
**The product is shipped with ice packs. Upon receipt, store it immediately at -80°C**

**Storage Buffer:**  
PBS only, pH7.3

For technical support and original validation data for this product please contact:

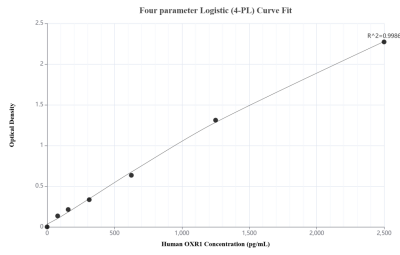
T: 4006900926

E: [Proteintech-CN@ptglab.com](mailto:Proteintech-CN@ptglab.com)

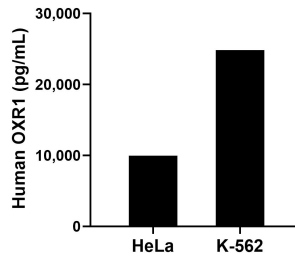
W: [ptgcn.com](http://ptgcn.com)

**This product is exclusively available under Proteintech Group brand and is not available to purchase from any other manufacturer.**

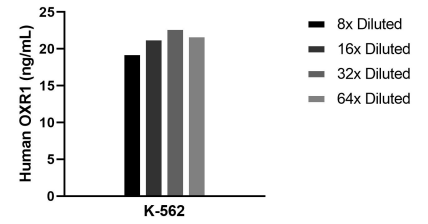
## Selected Validation Data



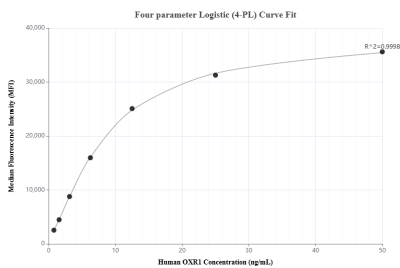
Sandwich ELISA standard curve of MP02376-1, Human OXR1 Recombinant Matched Antibody Pair - PBS only. 86359-2-PBS was coated to a plate as the capture antibody and incubated with serial dilutions of standard Ag4439. 86359-1-PBS was HRP conjugated as the detection antibody. Range: 78.1-2500 pg/mL



The mean OXR1 concentration was determined to be 9,942.9 ng/mL in HeLa cell extract based on a 1.2 mg/mL extract load and 24,819.9 ng/mL in K-562 cell extract based on a 1.2 mg/mL extract load.



The mean OXR1 concentration was determined to be 21.4 ng/mL in K-562 cell extract based on a 3.0 mg/mL extract load.



Cytometric bead array standard curve of MP02376-1, OXR1 Recombinant Matched Antibody Pair, PBS Only. Capture antibody: 86359-2-PBS. Detection antibody: 86359-1-PBS. Standard: Ag4439. Range: 0.781-50 ng/mL