

RPL17 Recombinant monoclonal antibody

Catalog Number: 86348-3-RR

Basic Information

Catalog Number:

86348-3-RR

Source:

Rabbit

Isotype:

IgG

Immunogen Catalog Number:

AG5270

GenBank Accession Number:

BC066323

GeneID (NCBI):

6139

UNIPROT ID:

P18621

Full Name:

ribosomal protein L17

Calculated MW:

21 kDa

Observed MW:

23 kDa

Purification Method:

Protein A purification

CloneNo.:

250901B1

Recommended Dilutions:

WB: 1:5000-1:50000

IF/ICC: 1:50-1:500

Applications

Tested Applications:

WB, IF/ICC, ELISA

Species Specificity:

human, mouse

Positive Controls:

WB : HeLa cells, HEK-293 cells, Jurkat cells, NIH-3T3 cells, mouse pancreas tissue, rat pancreas tissue

IF/ICC : Jurkat cells,

Background Information

Ribosomes, the organelles that catalyze protein synthesis, consist of a small 40S subunit and a large 60S subunit. Together these subunits are composed of 4 RNA species and approximately 80 structurally distinct proteins. RPL17 gene encodes a ribosomal protein that is a component of the 60S subunit belonging to the L22P family of ribosomal proteins. It is located in the cytoplasm. This gene has been referred to as rpl23 because the encoded protein shares amino acid identity with ribosomal protein L23 from *Halobacterium marismortui*; however, its official symbol is RPL17.

Storage

Storage:

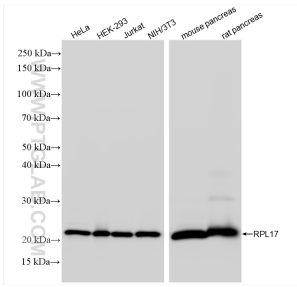
Store at -20°C. Stable for one year after shipment.

Storage Buffer:

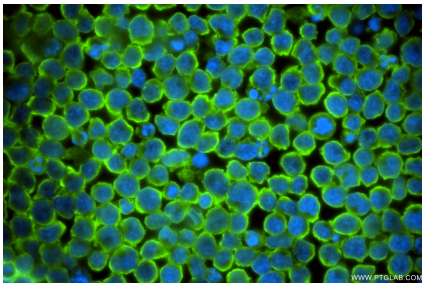
PBS with 0.02% sodium azide and 50% glycerol, pH7.3

Aliquoting is unnecessary for -20°C storage

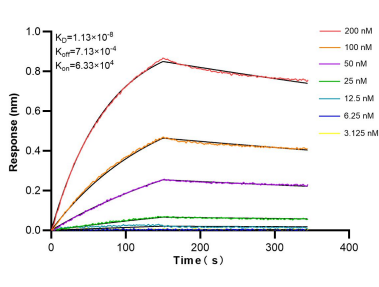
Selected Validation Data



Various lysates were subjected to SDS PAGE followed by western blot with 86348-3-RR (RPL17 antibody) at dilution of 1:10000 incubated at room temperature for 1.5 hours.



Immunofluorescent analysis of (4% PFA) fixed Jurkat cells using RPL17 antibody (86348-3-RR, Clone: 250901B1) at dilution of 1:200 and CoraLite® 488-Conjugated Goat Anti-Rabbit IgG(H+L) (SA00013-2).



Biolayer interferometry (BLI) kinetic assays of 86348-3-RR against Human RPL17 were performed. The affinity constant is 11.3 nM.