

For Research Use Only

RPL17 Recombinant monoclonal antibody, PBS Only

Catalog Number: 86348-3-PBS



Basic Information

Catalog Number:

86348-3-PBS

Source:

Rabbit

Isotype:

IgG

Immunogen Catalog Number:

AG5270

GenBank Accession Number:

BC066323

GeneID (NCBI):

6139

UNIPROT ID:

P18621

Full Name:

ribosomal protein L17

Calculated MW:

21 kDa

Observed MW:

23 kDa

Purification Method:

Protein A purification

CloneNo.:

250901B1

Applications

Tested Applications:

WB, IF/ICC, Indirect ELISA

Species Specificity:

human, mouse

Background Information

Ribosomes, the organelles that catalyze protein synthesis, consist of a small 40S subunit and a large 60S subunit. Together these subunits are composed of 4 RNA species and approximately 80 structurally distinct proteins. RPL17 gene encodes a ribosomal protein that is a component of the 60S subunit belonging to the L22P family of ribosomal proteins. It is located in the cytoplasm. This gene has been referred to as rpl23 because the encoded protein shares amino acid identity with ribosomal protein L23 from *Halobacterium marismortui*; however, its official symbol is RPL17.

Storage

Storage:

Store at -80°C.

The product is shipped with ice packs. Upon receipt, store it immediately at -80°C

Storage Buffer:

PBS only, pH7.3

For technical support and original validation data for this product please contact:

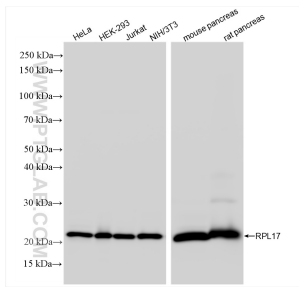
T: 4006900926

E: Proteintech-CN@ptglab.com

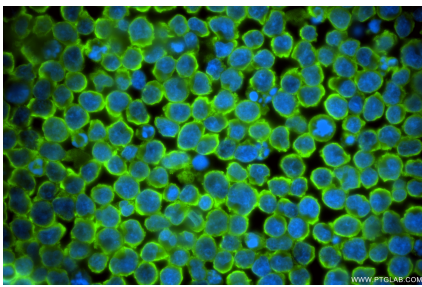
W: ptgcn.com

This product is exclusively available under Proteintech Group brand and is not available to purchase from any other manufacturer.

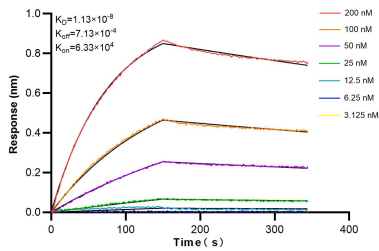
Selected Validation Data



Various lysates were subjected to SDS PAGE followed by western blot with 86348-3-RR (RPL17 antibody) at dilution of 1:10000 incubated at room temperature for 1.5 hours. This data was developed using the same antibody clone with 86348-3-PBS in a different storage buffer formulation.



Immunofluorescent analysis of (4% PFA) fixed Jurkat cells using RPL17 antibody (86348-3-RR, Clone: 250901B1) at dilution of 1:200 and CoraLite® 488-Conjugated Goat Anti-Rabbit IgG(H+L) (SA00013-2). This data was developed using the same antibody clone with 86348-3-PBS in a different storage buffer formulation.



Biolayer interferometry (BLI) kinetic assays of 86348-3-RR against Human RPL17 were performed. The affinity constant is 11.3 nM.