

For Research Use Only

IMPDH2 Recombinant antibody

Catalog Number: 86346-3-RR



Basic Information

Catalog Number:

86346-3-RR

Concentration:

1000 µg/ml

Source:

Rabbit

Isotype:

IgG

Immunogen Catalog Number:

AG3632

GenBank Accession Number:

BC012840

GeneID (NCBI):

3615

UNIPROT ID:

P12268

Full Name:

IMP (inosine monophosphate)
dehydrogenase 2

Calculated MW:

514 aa, 56 kDa

Observed MW:

56 kDa

Purification Method:

Protein A purification

CloneNo.:

251066H6

Recommended Dilutions:

WB: 1:5000-1:50000

Applications

Tested Applications:

WB, ELISA

Species Specificity:

human, mouse, rat

Positive Controls:

WB : HeLa cells, K-562 cells, MCF-7 cells, Jurkat cells,
HSC-T6 cells, 4T1 cells

Background Information

IMPDH2, also named as IMPD2, belongs to the IMPDH/GMPR family. It is a rate limiting enzyme in the de novo synthesis of guanine nucleotides and therefore is involved in the regulation of cell growth. It may also have a role in the development of malignancy and the growth progression of some tumors. IMPDH2 is a key enzyme in the purine nucleotide biosynthetic pathway and constitutes a pivotal biological target for immunosuppressant and antiviral drugs. (PMID:21181270)

Storage

Storage:

Store at -20°C. Stable for one year after shipment.

Storage Buffer:

PBS with 0.02% sodium azide and 50% glycerol, pH7.3

Aliquoting is unnecessary for -20°C storage

For technical support and original validation data for this product please contact:

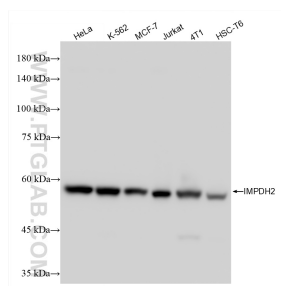
T: 4006900926

E: Proteintech-CN@ptglab.com

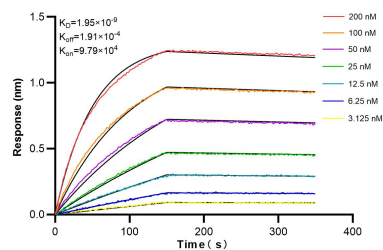
W: ptgcn.com

This product is exclusively available under Proteintech Group brand and is not available to purchase from any other manufacturer.

Selected Validation Data



Various lysates were subjected to SDS PAGE followed by western blot with 86346-3-RR (IMPDH2 antibody) at dilution of 1:10000 incubated at room temperature for 1.5 hours.



Biolayer interferometry (BLI) kinetic assays of 86346-3-RR against Human IMPDH2 were performed. The affinity constant is 1.95 nM.