

For Research Use Only

ATP6V1C1 Recombinant antibody

Catalog Number: 86345-2-RR



Basic Information

Catalog Number:

86345-2-RR

Concentration:

1000 μ g/ml

Source:

Rabbit

Isotype:

IgG

Immunogen Catalog Number:

AG9020

GenBank Accession Number:

BC010960

GeneID (NCBI):

528

UNIPROT ID:

P21283

Full Name:

ATPase, H⁺ transporting, lysosomal
42kDa, V1 subunit C1

Calculated MW:

382 aa, 44 kDa

Observed MW:

42-44 kDa

Purification Method:

Protein A purification

CloneNo.:

250958C3

Recommended Dilutions:

WB: 1:2000-1:10000

Applications

Tested Applications:

WB, ELISA

Species Specificity:

human, mouse, rat

Positive Controls:

WB : HeLa cells, U-251 cells, NIH/3T3 cells, mouse
brain tissue, fetal human brain tissue, human testis
tissue

Background Information

The vacuolar H⁺-ATPase (V-ATPase) is a functionally conserved multimeric complex localized at the membranes of many organelles where its proton-pumping action is required for proper lumen acidification (PMID: 39210597). ATP6V1C1, also known as ATPase, H⁺ transporting, lysosomal V1 subunit C1, is a component of the V1 sector of the V-ATPase complex. ATP6v1c1 knockdown significantly reduces tumor stimulated bone resorption through osteoclastogenesis at the bone and metastasis in vivo, as well as V-ATPase activity, proliferation, and mTORC1 activation in vitro (PMID: 28504970). Also, ATP6V1C1, associated with the tumor microenvironment and mTORC1 signaling pathway, is a potential diagnostic, prognostic, and therapeutic biomarker for hepatocellular carcinoma (PMID: 39557733).

Storage

Storage:

Store at -20°C. Stable for one year after shipment.

Storage Buffer:

PBS with 0.02% sodium azide and 50% glycerol, pH7.3

Aliquoting is unnecessary for -20°C storage

For technical support and original validation data for this product please contact:

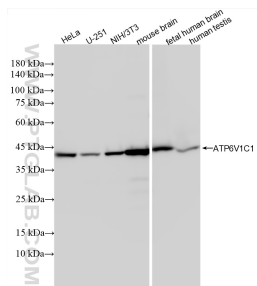
T: 4006900926

E: Proteintech-CN@ptglab.com

W: ptgcn.com

This product is exclusively available under Proteintech Group brand and is not available to purchase from any other manufacturer.

Selected Validation Data



Various lysates were subjected to SDS PAGE followed by western blot with 86345-2-RR (ATP6V1C1 antibody) at dilution of 1:5000 incubated at room temperature for 1.5 hours.