

For Research Use Only

ATP6V1C1 Recombinant antibody, PBS Only (Detector)

Catalog Number: 86345-1-PBS



Basic Information

Catalog Number:

86345-1-PBS

Concentration:

1 mg/ml

Source:

Rabbit

Isotype:

IgG

Immunogen Catalog Number:

AG9020

GenBank Accession Number:

BC010960

GeneID (NCBI):

528

UNIPROT ID:

P21283

Full Name:

ATPase, H⁺ transporting, lysosomal
42kDa, V1 subunit C1

Calculated MW:

382 aa, 44 kDa

Purification Method:

Protein A purification

CloneNo.:

250958E9

Applications

Tested Applications:

Cytometric bead array, Indirect ELISA, Sample test

Species Specificity:

human

Background Information

Storage

Storage:

Store at -80°C.

The product is shipped with ice packs. Upon receipt, store it immediately at -80°C

Storage Buffer:

PBS only, pH7.3

For technical support and original validation data for this product please contact:

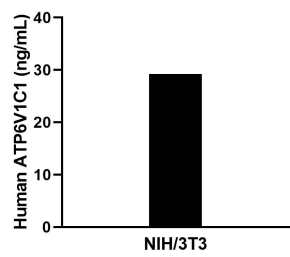
T: 4006900926

E: Proteintech-CN@ptglab.com

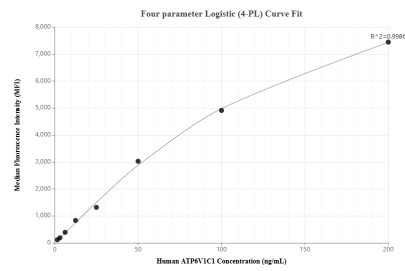
W: ptgcn.com

This product is exclusively available under Proteintech Group brand and is not available to purchase from any other manufacturer.

Selected Validation Data



The mean ATP6V1C1 concentration was determined to be 29.6 ng/mL in NIH/3T3 cell extract based on a 1.4 mg/mL extract load.



Cytometric bead array standard curve of MP02350-1, ATP6V1C1 Recombinant Matched Antibody Pair, PBS Only. Capture antibody: 86345-2-PBS. Detection antibody: 86345-1-PBS. Standard: Ag9020. Range: 1.562-200 ng/mL.