

For Research Use Only

IGSF8 Recombinant antibody, PBS Only (Capture)

Catalog Number: 86341-2-PBS



Basic Information

Catalog Number:

86341-2-PBS

Concentration:

1 mg/ml

Source:

Rabbit

Isotype:

IgG

Immunogen Catalog Number:

EG2664

GenBank Accession Number:

NM_052868.6

GeneID (NCBI):

93185

UNIPROT ID:

Q969P0-1

Full Name:

immunoglobulin superfamily,
member 8

Calculated MW:

65 kDa

Purification Method:

Protein A purification

CloneNo.:

243019G9

Applications

Tested Applications:

Cytometric bead array, Indirect ELISA, Sample test

Species Specificity:

human

Background Information

Storage

Storage:

Store at -80°C.

The product is shipped with ice packs. Upon receipt, store it immediately at -80°C

Storage Buffer:

PBS only, pH7.3

For technical support and original validation data for this product please contact:

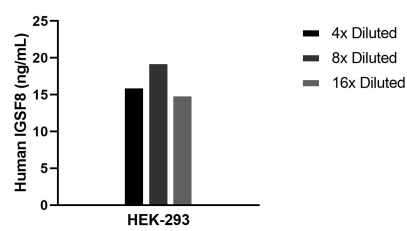
T: 4006900926

E: Proteintech-CN@ptglab.com

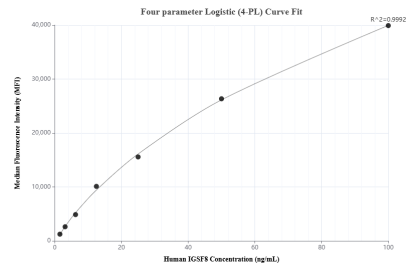
W: ptgcn.com

This product is exclusively available under Proteintech Group brand and is not available to purchase from any other manufacturer.

Selected Validation Data



The mean IGSF8 concentration was determined to be 16.8 ng/mL in HEK-293 cell extract based on a 2.6 mg/mL extract load.



Cytometric bead array standard curve of MP02356-1, IGSF8 Recombinant Matched Antibody Pair, PBS Only. Capture antibody: 86341-2-PBS. Detection antibody: 86341-1-PBS. Standard: Eg2664. Range: 1.562-100 ng/mL