

For Research Use Only

Mouse Ccl11 Recombinant antibody, PBS Only (Detector)

Catalog Number:86339-1-PBS



Basic Information

Catalog Number: 86339-1-PBS	GenBank Accession Number: NM_011330	Purification Method: Protein A purification
Concentration: 1 mg/ml	GeneID (NCBI): 20292	CloneNo.: 243012G7
Source: Rabbit	UNIPROT ID: P48298	
Isotype: IgG	Full Name: chemokine (C-C motif) ligand 11	
Immunogen Catalog Number: EG2400	Calculated MW: 11kd	

Applications

Tested Applications:
Sandwich ELISA, Indirect ELISA, Sample test

Species Specificity:
mouse

Background Information

Storage

Storage:
Store at -80°C.
The product is shipped with ice packs. Upon receipt, store it immediately at -80°C

Storage Buffer:
PBS only, pH7.3

For technical support and original validation data for this product please contact:

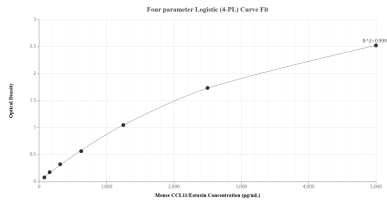
T: 4006900926

E: Proteintech-CN@ptglab.com

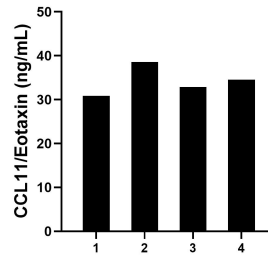
W: ptgcn.com

This product is exclusively available under Proteintech Group brand and is not available to purchase from any other manufacturer.

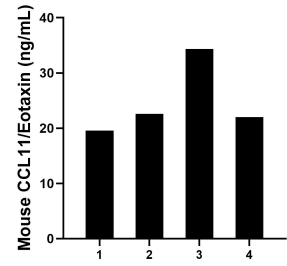
Selected Validation Data



Sandwich ELISA standard curve of MP02367-1, Mouse CCL11/Eotaxin Recombinant Matched Antibody Pair - PBS only. 86339-2-PBS was coated to a plate as the capture antibody and incubated with serial dilutions of standard Eg2400. 86339-1-PBS was HRP conjugated as the detection antibody. Range: 78.1-5000 pg/mL



Serum of four rats was measured. The CCL11/Eotaxin concentration of detected samples was determined to be 34.2 pg/mL with a range of 30.9-38.6 pg/mL.



Serum of four mice was measured. The CCL11/Eotaxin concentration of detected samples was determined to be 24.6 pg/mL with a range of 19.6-34.3 pg/mL.