

CD107a / LAMP1 Recombinant monoclonal antibody

Catalog Number: 86337-2-RR

Basic Information

Catalog Number: 86337-2-RR	GenBank Accession Number: NM_010684.3	Purification Method: Protein A purification
Source: Rabbit	GeneID (NCBI): 16783	CloneNo.: 250972C12
Isotype: IgG	UNIPROT ID: P11438	Recommended Dilutions: WB: 1:1000-1:6000 IF-P: 1:50-1:500 IF/ICC: 1:250-1:1000
Immunogen Catalog Number: EG3858	Full Name: lysosomal-associated membrane protein 1	
	Calculated MW: 44 kDa	
	Observed MW: 90-120 kDa	

Applications

Tested Applications: WB, IF/ICC, IF-P, ELISA	Positive Controls:
Species Specificity: mouse	WB: Neuro-2a cells, NIH/3T3 cells, EL-4 cells, mouse thymus tissue, mouse small intestine cells
	IF-P: mouse liver tissue,
	IF/ICC: C2C12 cells, NIH/3T3 cells

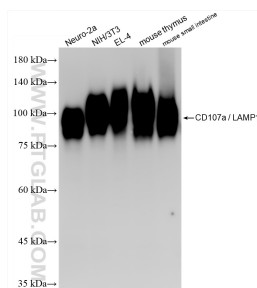
Background Information

LAMP1 (CD107a) is a heavily glycosylated membrane protein enriched in the lysosomal membrane. LAMP1 is extensively glycosylated with asparagine-linked oligosaccharides which protect it from intracellular proteolysis (PMID: 10521503). Although LAMP1 is expressed largely in the endosome-lysosomal membrane of cells, it is also found on the plasma membrane (PMID: 16168398). Elevated LAMP1 expression at the cell surface has also been detected during platelet and granulocytic cell activation, as well as in some tumor cells (PMID: 29085473). LAMP1 functions to provide selectins with carbohydrate ligands. This protein has also been shown to be a marker of degranulation on lymphocytes such as CD8+ and NK cells and may also play a role in tumor cell differentiation and metastasis (PMID: 18835598; 29085473; 9426697).

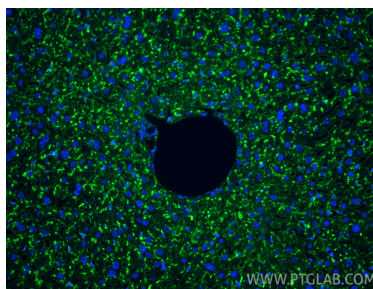
Storage

Storage:
Store at -20°C. Stable for one year after shipment.
Storage Buffer:
PBS with 0.02% sodium azide and 50% glycerol, pH7.3
Aliquoting is unnecessary for -20°C storage

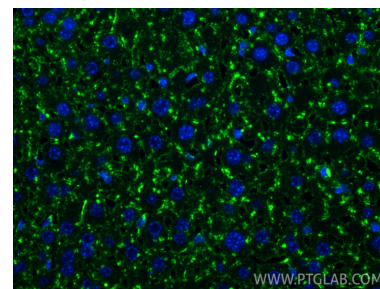
Selected Validation Data



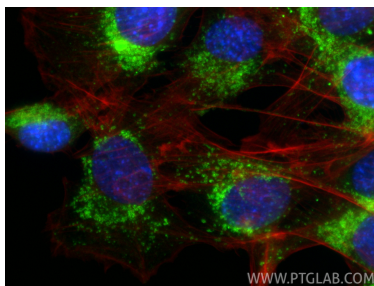
Various lysates were subjected to SDS PAGE followed by western blot with 86337-2-RR (LAMP-1/CD107a antibody) at dilution of 1:3000 incubated at room temperature for 1.5 hours.



Immunofluorescent analysis of (4% PFA) fixed paraffin-embedded mouse liver tissue using CD107a / LAMP1 antibody (86337-2-RR, Clone: 250972C12) at dilution of 1:200 and CoraLite®488-Conjugated Goat Anti-Rabbit IgG(H+L) (SA00013-2). Heat mediated antigen retrieval with Tris-EDTA buffer (pH 9.0).



Immunofluorescent analysis of (4% PFA) fixed paraffin-embedded mouse liver tissue using CD107a / LAMP1 antibody (86337-2-RR, Clone: 250972C12) at dilution of 1:200 and CoraLite®488-Conjugated Goat Anti-Rabbit IgG(H+L) (SA00013-2). Heat mediated antigen retrieval with Tris-EDTA buffer (pH 9.0).



Immunofluorescent analysis of (4% PFA) fixed C2C12 cells using CD107a / LAMP1 antibody (86337-2-RR, Clone: 250972C12) at dilution of 1:500 and CoraLite®488-Conjugated Goat Anti-Rabbit IgG(H+L) (SA00013-2), CL594-phalloidin (red).