

For Research Use Only

Mouse CD107a / LAMP1 Recombinant monoclonal antibody, PBS Only (Capture)

Catalog Number: 86337-2-PBS



Basic Information

Catalog Number: 86337-2-PBS	GenBank Accession Number: NM_010684.3	Purification Method: Protein A purification
Source: Rabbit	GeneID (NCBI): 16783	CloneNo.: 250972C12
Isotype: IgG	UNIPROT ID: P11438	
Immunogen Catalog Number: EG3858	Full Name: lysosomal-associated membrane protein 1	
	Calculated MW: 44 kDa	
	Observed MW: 90-120 kDa	

Applications

Tested Applications:
WB, IF/ICC, IF-P, Cytometric bead array, Indirect ELISA

Species Specificity:
mouse

Background Information

LAMP1 (CD107a) is a heavily glycosylated membrane protein enriched in the lysosomal membrane. LAMP1 is extensively glycosylated with asparagine-linked oligosaccharides which protect it from intracellular proteolysis (PMID: 10521503). Although LAMP1 is expressed largely in the endosome-lysosomal membrane of cells, it is also found on the plasma membrane (PMID: 16168398). Elevated LAMP1 expression at the cell surface has also been detected during platelet and granulocytic cell activation, as well as in some tumor cells (PMID: 29085473). LAMP1 functions to provide selectins with carbohydrate ligands. This protein has also been shown to be a marker of degranulation on lymphocytes such as CD8+ and NK cells and may also play a role in tumor cell differentiation and metastasis (PMID: 18835598; 29085473; 9426697).

Storage

Storage:
Store at -80°C.
The product is shipped with ice packs. Upon receipt, store it immediately at -80°C

Storage Buffer:
PBS only, pH7.3

For technical support and original validation data for this product please contact:

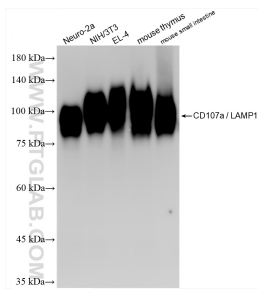
T: 4006900926

E: Proteintech-CN@ptglab.com

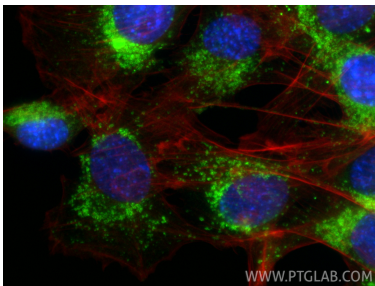
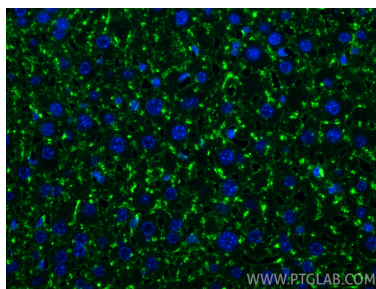
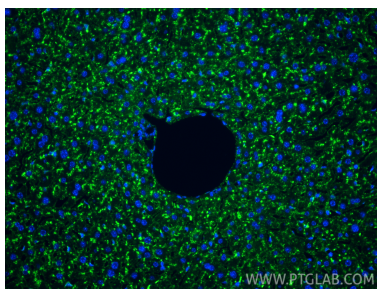
W: ptgcn.com

This product is exclusively available under Proteintech Group brand and is not available to purchase from any other manufacturer.

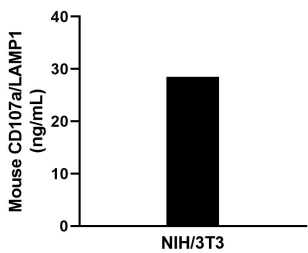
Selected Validation Data



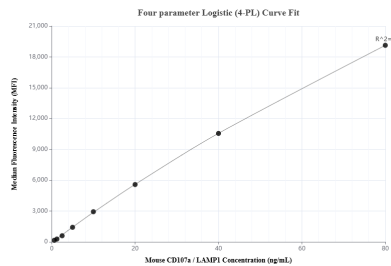
Various lysates were subjected to SDS PAGE followed by western blot with 86337-2-RR (LAMP-1/CD107a antibody) at dilution of 1:3000 incubated at room temperature for 1.5 hours. This data was developed using the same antibody clone with 86337-2-PBS in a different storage buffer formulation.



Immunofluorescent analysis of (4% PFA) fixed C2C12 cells using CD107a / LAMP1 antibody (86337-2-RR, Clone: 250972C12) at dilution of 1:500 and CoraLite®488-Conjugated Goat Anti-Rabbit IgG(H+L) (SA00013-2), CL594-phalloidin (red). This data was developed using the same antibody clone with 86337-2-PBS in a different storage buffer formulation.



The mean CD107a / LAMP1 concentration was determined to be 28.9 ng/mL in NIH/3T3 cell extract based on a 1.4 mg/mL extract load.



Cytometric bead array standard curve of MP02362-1, MOUSE CD107a / LAMP1 Recombinant Matched Antibody Pair, PBS Only. Capture antibody: 86337-2-PBS. Detection antibody: 86337-1-PBS. Standard: Eg3858. Range: 0.625-80 ng/mL.