

For Research Use Only

# CD39/ENTPD1 Recombinant antibody

Catalog Number: 86327-1-RR



## Basic Information

Catalog Number:

86327-1-RR

Concentration:

1000 µg/ml

Source:

Rabbit

Isotype:

IgG

Immunogen Catalog Number:

EG3483

GenBank Accession Number:

NM\_009848.4

GeneID (NCBI):

12495

UNIPROT ID:

P55772

Full Name:

ectonucleoside triphosphate  
diphosphohydrolase 1

Calculated MW:

57 kDa

Observed MW:

75 kDa

Purification Method:

Protein A purification

CloneNo.:

25076485

Recommended Dilutions:

WB: 1:5000-1:50000

## Applications

Tested Applications:

WB, ELISA

Species Specificity:

mouse

Positive Controls:

WB : mouse heart tissue, mouse lung tissue, mouse  
spleen tissue

## Background Information

ENTPD1 (Ectonucleoside triphosphate diphosphohydrolase 1) is also named CD39, NTPDase 1, and Ecto-ATPDase 1 and belongs to the GDA1/CD39 NTPase family. In the nervous system, it can hydrolyze ATP and other nucleotides to regulate purinergic neurotransmission. It is a noncovalent tetrameric protein and detergent inhibition of enzymatic activity is caused by dissociation of ectoapyrase tetramers into monomers(PMID: 9733785 ). And it is a 70- to 100-kDa protein that is heavily N-glycosylated (PMID:7930580). This protein has 6 glycosylation sites and 3 isoforms (58 kDa, 59 kDa, and 34 kDa) produced by alternative splicing.

## Storage

Storage:

Store at -20°C. Stable for one year after shipment.

Storage Buffer:

PBS with 0.02% sodium azide and 50% glycerol, pH7.3

Aliquoting is unnecessary for -20°C storage

For technical support and original validation data for this product please contact:

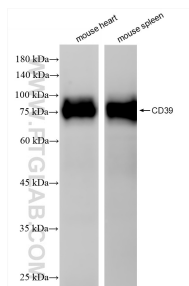
T: 4006900926

E: Proteintech-CN@ptglab.com

W: ptgcn.com

This product is exclusively available under Proteintech Group brand and is not available to purchase from any other manufacturer.

## Selected Validation Data



Various lysates were subjected to SDS PAGE followed by western blot with 86327-1-RR (CD39 antibody) at dilution of 1:10000 incubated at room temperature for 1.5 hours.