

For Research Use Only

# PRPF31 Recombinant antibody

Catalog Number: 86315-2-RR



## Basic Information

Catalog Number:

86315-2-RR

Concentration:

1000 µg/ml

Source:

Rabbit

Isotype:

IgG

Immunogen Catalog Number:

AG26716

GenBank Accession Number:

NM\_015629

GeneID (NCBI):

26121

UNIPROT ID:

Q8WWY3

Full Name:

PRP31 pre-mRNA processing factor 31  
homolog (S. cerevisiae)

Calculated MW:

55 kDa

Observed MW:

55-60 kDa

Purification Method:

Protein A purification

CloneNo.:

251005H8

Recommended Dilutions:

WB: 1:5000-1:50000

IF/ICC: 1:250-1:1000

## Applications

Tested Applications:

WB, IF/ICC, ELISA

Species Specificity:

human

Positive Controls:

WB : Jurkat cells, HeLa cells, A549 cells, Caco-2 cells,  
OVCAR-3 cells

IF/ICC : Jurkat cells, HeLa cells

## Background Information

PRPF31 is a component of the spliceosome complex. It is recruited to introns following the attachment of U4 and U6 RNAs and the 15.5K protein. The addition of PRPF31 is crucial for the transition of the spliceosomal complex to the activated state.

## Storage

Storage:

Store at -20°C. Stable for one year after shipment.

Storage Buffer:

PBS with 0.02% sodium azide and 50% glycerol, pH7.3

Aliquoting is unnecessary for -20°C storage

For technical support and original validation data for this product please contact:

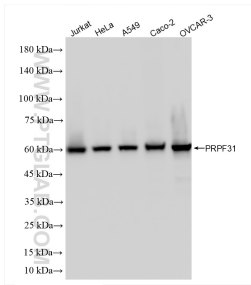
T: 4006900926

E: Proteintech-CN@ptglab.com

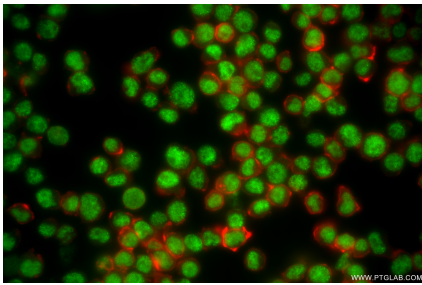
W: ptgcn.com

This product is exclusively available under Proteintech Group brand and is not available to purchase from any other manufacturer.

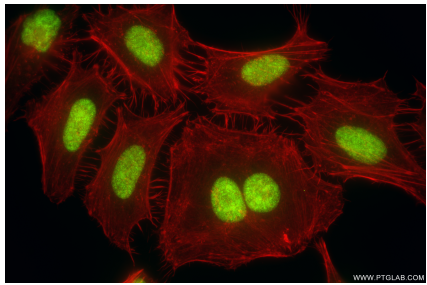
Selected Validation Data



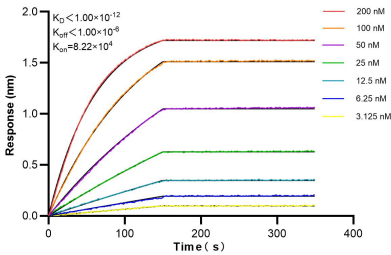
Various lysates were subjected to SDS PAGE followed by western blot with 86315-2-RR (PRPF31 antibody) at dilution of 1:10000 incubated at room temperature for 1.5 hours.



Immunofluorescent analysis of (4% PFA) fixed Jurkat cells using PRPF31 antibody (86315-2-RR, Clone: 251005H8 ) at dilution of 1:500 and CoraLite®488-Conjugated Goat Anti-Rabbit IgG(H+L) (SA00013-2), CL594-Phalloidin (red).



Immunofluorescent analysis of (4% PFA) fixed HeLa cells using PRPF31 antibody (86315-2-RR, Clone: 251005H8 ) at dilution of 1:500 and CoraLite®488-Conjugated Goat Anti-Rabbit IgG(H+L) (SA00013-2), CL594-Phalloidin (red).



Biolayer interferometry (BLI) kinetic assays of 86315-2-RR against Human PRPF31 were performed. The affinity constant is below 1 pM.