

For Research Use Only

# PRPF31 Recombinant monoclonal antibody, PBS Only (Capture)

Catalog Number: 86315-1-PBS



## Basic Information

Catalog Number:

86315-1-PBS

Source:

Rabbit

Isotype:

IgG

Immunogen Catalog Number:

AG26716

GenBank Accession Number:

NM\_015629

GeneID (NCBI):

26121

UNIPROT ID:

Q8WWY3

Full Name:

PRP31 pre-mRNA processing factor 31 homolog (S. cerevisiae)

Calculated MW:

55 kDa

Observed MW:

55-60 kDa

Purification Method:

Protein A purification

CloneNo.:

251005G5

## Applications

Tested Applications:

WB, Sandwich ELISA, Indirect ELISA

Species Specificity:

human, mouse

## Background Information

PRPF31 is a component of the spliceosome complex. It is recruited to introns following the attachment of U4 and U6 RNAs and the 15.5K protein. The addition of PRPF31 is crucial for the transition of the spliceosomal complex to the activated state.

## Storage

Storage:

Store at -80°C.

The product is shipped with ice packs. Upon receipt, store it immediately at -80°C

Storage Buffer:

PBS only, pH7.3

For technical support and original validation data for this product please contact:

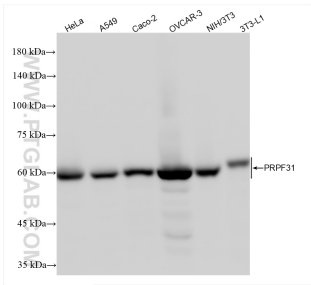
T: 4006900926

E: [Proteintech-CN@ptglab.com](mailto:Proteintech-CN@ptglab.com)

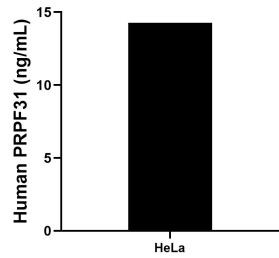
W: [ptgcn.com](http://ptgcn.com)

This product is exclusively available under Proteintech Group brand and is not available to purchase from any other manufacturer.

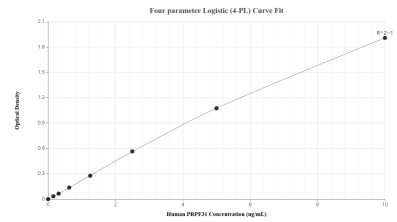
## Selected Validation Data



Various lysates were subjected to SDS PAGE followed by western blot with 86315-1-RR (PRPF31 antibody) at dilution of 1:10000 incubated at room temperature for 1.5 hours. This data was developed using the same antibody clone with 86315-1-PBS in a different storage buffer formulation.



The mean PRPF31 concentration was determined to be 14.26 ng/mL in HeLa cell extract based on a 1.10 mg/mL extract load.



Sandwich ELISA standard curve of MP02586-1, Human PRPF31 Recombinant Matched Antibody Pair - PBS only. 86315-1-PBS was coated to a plate as the capture antibody and incubated with serial dilutions of standard Ag26716. 86315-3-PBS was HRP conjugated as the detection antibody. Range: 0.156-10 ng/mL.