

For Research Use Only

KRT72 Recombinant monoclonal antibody

Catalog Number:86311-2-RR



Basic Information

Catalog Number:

86311-2-RR

Concentration:

1000 µg/ml

Source:

Rabbit

Isotype:

IgG

GenBank Accession Number:

BC113686

GeneID (NCBI):

140807

UNIPROT ID:

Q14CN4

Full Name:

keratin 72

Calculated MW:

56 kDa

Observed MW:

56 kDa

Purification Method:

Protein A purification

CloneNo.:

250919C3

Recommended Dilutions:

WB: 1:1000-1:6000

IF/ICC: 1:200-1:800

Applications

Tested Applications:

WB, IF/ICC, ELISA

Species Specificity:

human

Positive Controls:

WB : human saliva,

IF/ICC : MCF-7 cells,

Background Information

Storage

Storage:

Store at -20°C. Stable for one year after shipment.

Storage Buffer:

PBS with 0.02% sodium azide and 50% glycerol, pH7.3

Aliquoting is unnecessary for -20°C storage

For technical support and original validation data for this product please contact:

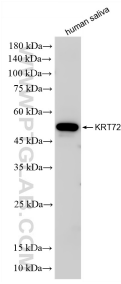
T: 4006900926

E: Proteintech-CN@ptglab.com

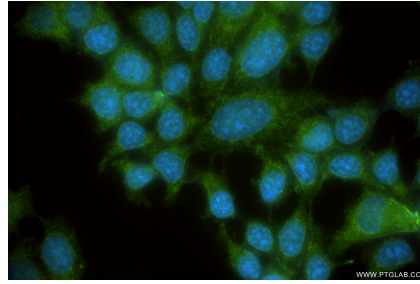
W: ptgcn.com

This product is exclusively available under Proteintech Group brand and is not available to purchase from any other manufacturer.

Selected Validation Data



human saliva were subjected to SDS PAGE followed by western blot with 86311-2-RR (KRT72 antibody) at dilution of 1:3000 incubated at room temperature for 1.5 hours.



Immunofluorescent analysis of (-20°C Ethanol) fixed MCF-7 cells using KRT72 antibody (86311-2-RR, Clone: 250919C3) at dilution of 1:400 and CoraLite® 488-Conjugated Goat Anti-Rabbit IgG(H+L) (SA00013-2).