

For Research Use Only

KRT72 Recombinant monoclonal antibody, PBS Only

Catalog Number:86311-2-PBS



Basic Information

Catalog Number:

86311-2-PBS

Concentration:

1000 μ g/ml

Source:

Rabbit

Isotype:

IgG

GenBank Accession Number:

BC113686

GeneID (NCBI):

140807

UNIPROT ID:

Q14CN4

Full Name:

keratin 72

Calculated MW:

56 kDa

Observed MW:

56 kDa

Purification Method:

Protein A purification

CloneNo.:

250919C3

Applications

Tested Applications:

WB, IF/ICC, Indirect ELISA

Species Specificity:

human

Background Information

Storage

Storage:

Store at -80°C .

The product is shipped with ice packs. Upon receipt, store it immediately at -80°C

Storage Buffer:

PBS only, pH7.3

For technical support and original validation data for this product please contact:

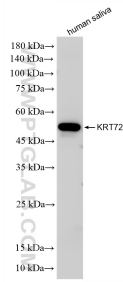
T: 4006900926

E: Proteintech-CN@ptglab.com

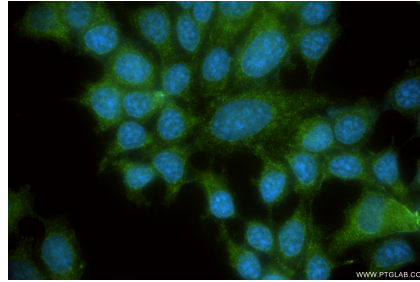
W: ptgcn.com

This product is exclusively available under Proteintech Group brand and is not available to purchase from any other manufacturer.

Selected Validation Data



human saliva were subjected to SDS PAGE followed by western blot with 86311-2-RR (KRT72 antibody) at dilution of 1:3000 incubated at room temperature for 1.5 hours. This data was developed using the same antibody clone with 86311-2-PBS in a different storage buffer formulation.



Immunofluorescent analysis of (-20°C Ethanol) fixed MCF-7 cells using KRT72 antibody (86311-2-RR, Clone: 250919C3) at dilution of 1:400 and CoraLite® 488-Conjugated Goat Anti-Rabbit IgG(H+L) (SA00013-2). This data was developed using the same antibody clone with 86311-2-PBS in a different storage buffer formulation.