

For Research Use Only

# Phospho-Cofilin (Ser3) Recombinant monoclonal antibody

Catalog Number: 86307-1-RR



## Basic Information

Catalog Number:

86307-1-RR

Source:

Rabbit

Isotype:

IgG

GenBank Accession Number:

BC012318

GeneID (NCBI):

1072

UNIPROT ID:

P23528

Full Name:

cofilin 1 (non-muscle)

Calculated MW:

18 kDa

Observed MW:

18 kDa

Purification Method:

Protein A purification

CloneNo.:

250986H5

Recommended Dilutions:

WB: 1:2000-1:10000

IF/ICC: 1:200-1:800

## Applications

Tested Applications:

WB, IF/ICC, ELISA

Species Specificity:

human, mouse

Positive Controls:

WB: HeLa cells, NIH/3T3 cells,  $\lambda$  phosphatase treated HeLa cells,  $\lambda$  phosphatase treated NIH/3T3 cells

IF/ICC:  $\lambda$  phosphatase treated HeLa cells,

## Background Information

Cofilin is a ubiquitous actin-binding protein required for the reorganization of actin filaments. It is a member of the ADF (actin-depolymerizing factor)/cofilin family that is a key regulator of actin dynamics and essential for cellular motility, cytokinesis, and endocytosis. Cofilin activity is tightly regulated by phosphorylation and dephosphorylation. Phosphorylation at Ser3 can inhibit its activity, also causing translocation from the nucleus to the cytoplasm.

## Storage

Storage:

Store at -20°C. Stable for one year after shipment.

Storage Buffer:

PBS with 0.02% sodium azide and 50% glycerol, pH7.3

Aliquoting is unnecessary for -20°C storage

For technical support and original validation data for this product please contact:

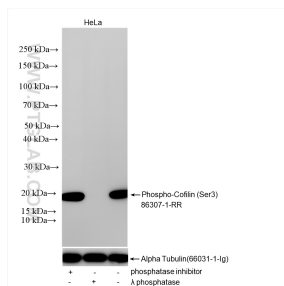
T: 4006900926

E: [Proteintech-CN@ptglab.com](mailto:Proteintech-CN@ptglab.com)

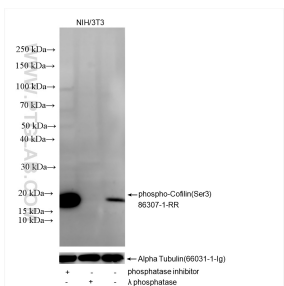
W: [ptgcn.com](http://ptgcn.com)

This product is exclusively available under Proteintech Group brand and is not available to purchase from any other manufacturer.

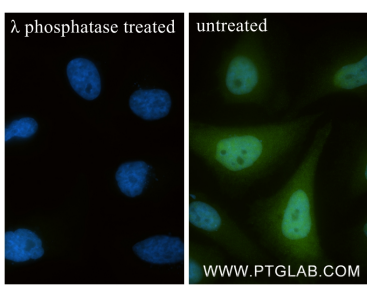
## Selected Validation Data



Non-treated HeLa cells, phosphatase inhibitor treated HeLa cells and λ phosphatase treated HeLa cells were subjected to SDS PAGE followed by western blot with 86307-1-RR (Phospho-Cofilin (Ser3) antibody) at dilution of 1:5000 incubated at room temperature for 1.5 hours. The membrane was stripped and re-blotted with Alpha Tubulin (66031-1-Ig) antibody as a loading control.



Non-treated NIH/3T3 cells, phosphatase inhibitor treated NIH/3T3 cells and λ phosphatase treated NIH/3T3 cells were subjected to SDS PAGE followed by western blot with 86307-1-RR (Phospho-Cofilin (Ser3) antibody) at dilution of 1:5000 incubated at room temperature for 1.5 hours. The membrane was stripped and re-blotted with Alpha Tubulin (66031-1-Ig) antibody as a loading control.



Immunofluorescent analysis of (4% PFA) fixed λ phosphatase treated HeLa cells using Phospho-Cofilin (Ser3) antibody (86307-1-RR, Clone: 250986H5 ) at dilution of 1:400 and CoraLite®488-Conjugated Goat Anti-Rabbit IgG(H+L) (SA00013-2).