

L1CAM/CD171 Recombinant antibody

Catalog Number: 86305-2-RR

Basic Information

Catalog Number:	86305-2-RR	GenBank Accession Number:	N/A	Purification Method:	Protein A purification
Concentration:	1000 µg/ml	GeneID (NCBI):	16728	CloneNo.:	250101C11
Source:	Rabbit	UNIPROT ID:	P11627	Recommended Dilutions:	
Isotype:	IgG	Full Name:	L1 cell adhesion molecule	WB:	1:5000-1:50000
Immunogen Catalog Number:	EG3022	Calculated MW:	141 kDa	IHC:	1:200-1:800
		Observed MW:	210-250 kDa	IF/ICC:	1:400-1:1600

Applications

Tested Applications:	WB, IHC, IF/ICC, ELISA	Positive Controls:	
Species Specificity:	mouse, rat	WB :	PC-12 cells, mouse brain tissue
Note-IHC: suggested antigen retrieval with TE buffer pH 9.0; (*) Alternatively, antigen retrieval may be performed with citrate buffer pH 6.0		IHC :	mouse kidney tissue,
		IF/ICC :	Neuro-2a cells,

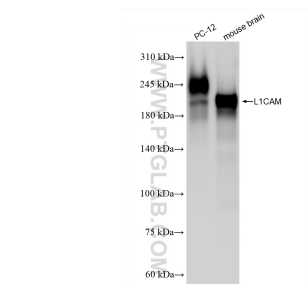
Background Information

L1CAM, also known as NCAM-L1 or CD171, is a cell adhesion molecule of the immunoglobulin superfamily. It is a 200-220 kDa transmembrane glycoprotein composed of six Ig-like domains and five fibronectin type III repeats followed by a transmembrane region and a highly conserved cytoplasmic tail (PMID: 3412448; 22796939). L1CAM is primarily expressed in the nervous system and is involved in neuron-neuron adhesion, neurite fasciculation, outgrowth of neurites, cerebellar granule cell migration, neurite outgrowth on Schwann cells and interactions among epithelial cells of intestinal crypts (PMID: 3412448; 10767310).

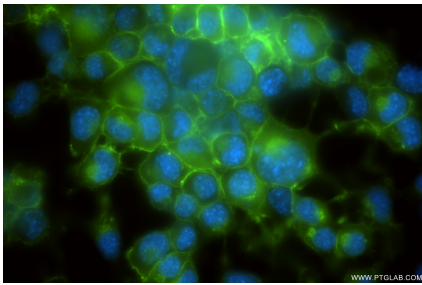
Storage

Storage:
Store at -20°C. Stable for one year after shipment.
Storage Buffer:
PBS with 0.02% sodium azide and 50% glycerol, pH7.3
Aliquoting is unnecessary for -20°C storage

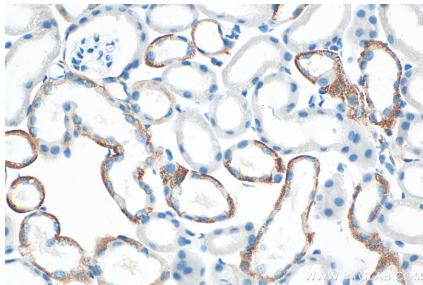
Selected Validation Data



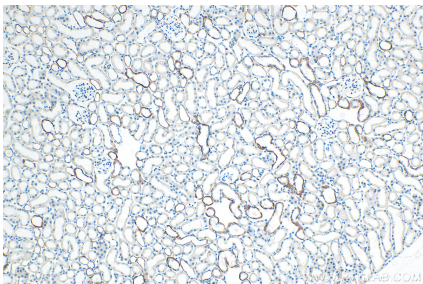
Various lysates were subjected to SDS PAGE followed by western blot with 86305-2-RR (L1CAM/CD171 antibody) at dilution of 1:20000 incubated at room temperature for 1.5 hours.



Immunofluorescent analysis of (4% PFA) fixed Neuro-2a cells using L1CAM/CD171 antibody (86305-2-RR, Clone: 250101C11) at dilution of 1:800 and CoraLite®488-Conjugated Goat Anti-Rabbit IgG(H+L) (SA00013-2).



Immunohistochemical analysis of paraffin-embedded mouse kidney tissue slide using 86305-2-RR (L1CAM/CD171 antibody) at dilution of 1:400 (under 40x lens). Heat mediated antigen retrieval with Tris-EDTA buffer (pH 9.0).



Immunohistochemical analysis of paraffin-embedded mouse kidney tissue slide using 86305-2-RR (L1CAM/CD171 antibody) at dilution of 1:400 (under 10x lens). Heat mediated antigen retrieval with Tris-EDTA buffer (pH 9.0).