

For Research Use Only

Mouse Ace2 Recombinant antibody, PBS Only (Detector)

Catalog Number:86303-2-PBS



Basic Information

Catalog Number: 86303-2-PBS	GenBank Accession Number: NM_001130513.1	Purification Method: Protein A purification
Concentration: 1 mg/ml	GeneID (NCBI): 70008	CloneNo.: 250137B8
Source: Rabbit	UNIPROT ID: Q8R0I0-1	
Isotype: IgG	Full Name: angiotensin I converting enzyme (peptidyl-di-peptidase A) 2	
Immunogen Catalog Number: EG2834	Calculated MW: 92 kDa	

Applications

Tested Applications:
Sandwich ELISA, Indirect ELISA, Sample test

Species Specificity:
mouse

Background Information

Storage

Storage:
Store at -80°C.
The product is shipped with ice packs. Upon receipt, store it immediately at -80°C

Storage Buffer:
PBS only, pH7.3

For technical support and original validation data for this product please contact:

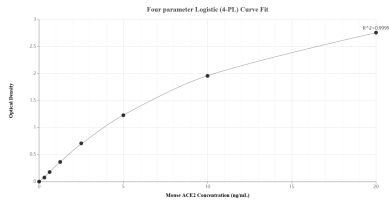
T: 4006900926

E: Proteintech-CN@ptglab.com

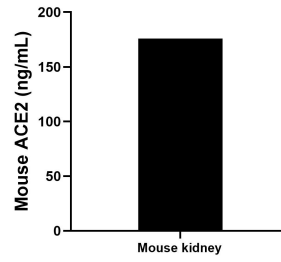
W: ptgcn.com

This product is exclusively available under Proteintech Group brand and is not available to purchase from any other manufacturer.

Selected Validation Data



Sandwich ELISA standard curve of MP02503-1, Mouse ACE2 Recombinant Matched Antibody Pair - PBS only. 86303-3-PBS was coated to a plate as the capture antibody and incubated with serial dilutions of standard Eg2834. 86303-2-PBS was HRP conjugated as the detection antibody. Range: 0.313-20 ng/mL



The mean ACE2 concentration was determined to be 175.80 ng/mL in mouse kidney tissue extract based on a 8.40 mg/mL extract load.