

For Research Use Only

RBM26 Recombinant antibody, PBS Only

Catalog Number: 86302-1-PBS



Basic Information

Catalog Number:

86302-1-PBS

Concentration:

1000 µg/ml

Source:

Rabbit

Isotype:

IgG

Immunogen Catalog Number:

AG10398

GenBank Accession Number:

BC000791

GeneID (NCBI):

64062

UNIPROT ID:

Q5T8P6

Full Name:

RNA binding motif protein 26

Calculated MW:

983 aa, 111 kDa

Observed MW:

130-140 kDa

Purification Method:

Protein A purification

CloneNo.:

250871F5

Applications

Tested Applications:

WB, IF/ICC, Indirect ELISA

Species Specificity:

human, mouse, rat

Background Information

Storage

Storage:

Store at -80°C.

The product is shipped with ice packs. Upon receipt, store it immediately at -80°C

Storage Buffer:

PBS only, pH7.3

For technical support and original validation data for this product please contact:

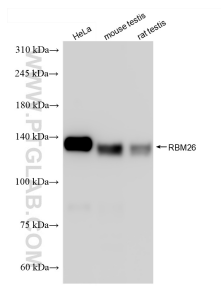
T: 4006900926

E: Proteintech-CN@ptglab.com

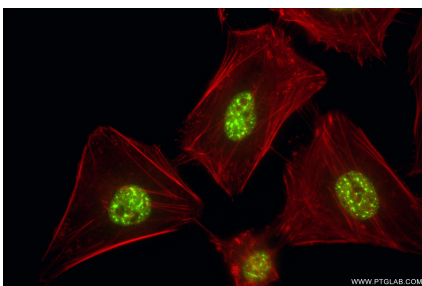
W: ptgcn.com

This product is exclusively available under Proteintech Group brand and is not available to purchase from any other manufacturer.

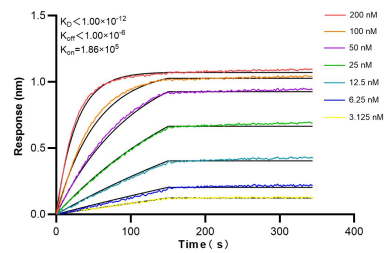
Selected Validation Data



Various lysates were subjected to SDS PAGE followed by western blot with 86302-1-RR (RBM26 antibody) at dilution of 1:5000 incubated at room temperature for 1.5 hours. This data was developed using the same antibody clone with 86302-1-PBS in a different storage buffer formulation.



Immunofluorescent analysis of (4% PFA) fixed HeLa cells using RBM26 antibody (86302-1-RR, Clone: 250871F5) at dilution of 1:800 and CoraLite® 488-Conjugated Goat Anti-Rabbit IgG(H+L) (SA00013-2), CL594-Phalloidin (red). This data was developed using the same antibody clone with 86302-1-PBS in a different storage buffer formulation.



Biolayer interferometry (BLI) kinetic assays of 86302-1-RR against Human RBM26 were performed. The affinity constant is below 1 pM.