

For Research Use Only

ALDH4A1 Recombinant antibody

Catalog Number: 86297-1-RR



Basic Information

Catalog Number:

86297-1-RR

Concentration:

1000 µg/ml

Source:

Rabbit

Isotype:

IgG

Immunogen Catalog Number:

AG2147

GenBank Accession Number:

BC023600

GeneID (NCBI):

8659

UNIPROT ID:

P30038

Full Name:

aldehyde dehydrogenase 4 family,
member A1

Calculated MW:

563 aa, 62 kDa

Observed MW:

62 kDa

Purification Method:

Protein A purification

CloneNo.:

250957F8

Recommended Dilutions:

WB: 1:5000-1:50000

Applications

Tested Applications:

WB, ELISA

Species Specificity:

human, mouse, rat

Positive Controls:

WB : HepG2 cells, K-562 cells, A549 cells, BT-474 cells,
mouse skeletal muscle tissue, rat skeletal muscle
tissue, human skeletal muscle tissue

Background Information

ALDH4A1 (Aldehyde dehydrogenase family 4 member A1) is also named as ALDH4, P5CDH, P5C dehydrogenase and belongs to the aldehyde dehydrogenase family. P5CDH is a mitochondrial matrix NAD(+) dependent dehydrogenase which catalyzes the second step of the proline degradation pathway, converting pyrroline-5-carboxylate to glutamate. Defects in ALDH4A1 are the cause of hyperprolinemia type 2 (HP-2).

Storage

Storage:

Store at -20°C. Stable for one year after shipment.

Storage Buffer:

PBS with 0.02% sodium azide and 50% glycerol, pH7.3

Aliquoting is unnecessary for -20°C storage

For technical support and original validation data for this product please contact:

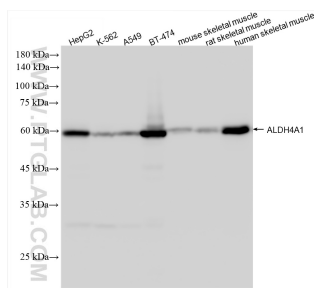
T: 4006900926

E: Proteintech-CN@ptglab.com

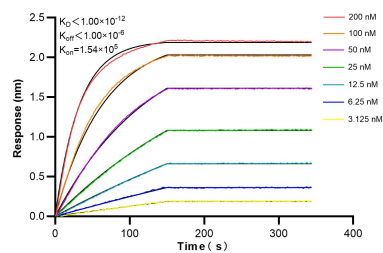
W: ptgcn.com

This product is exclusively available under Proteintech Group brand and is not available to purchase from any other manufacturer.

Selected Validation Data



Various lysates were subjected to SDS PAGE followed by western blot with 86297-1-RR (ALDH4A1 antibody) at dilution of 1:10000 incubated at room temperature for 1.5 hours.



Biolayer interferometry (BLI) kinetic assays of 86297-1-RR against Human ALDH4A1 were performed. The affinity constant is below 1 pM.