

For Research Use Only

CDK12/CRKRS Recombinant antibody

Catalog Number: 86296-3-RR



Basic Information

Catalog Number:

86296-3-RR

Concentration:

1000 µg/ml

Source:

Rabbit

Isotype:

IgG

Immunogen Catalog Number:

AG25312

GenBank Accession Number:

BC150265

GeneID (NCBI):

51755

UNIPROT ID:

Q9NYV4

Full Name:

Cdc2-related kinase, arginine/serine-rich

Calculated MW:

1490 aa, 164 kDa

Observed MW:

180-200 kDa

Purification Method:

Protein A purification

CloneNo.:

250880E5

Recommended Dilutions:

WB: 1:1000-1:6000

IF/ICC: 1:500-1:2000

Applications

Tested Applications:

WB, IF/ICC, ELISA

Species Specificity:

human, mouse

Positive Controls:

WB : HeLa cells, NIH/3T3 cells, HEK-293T cells, Jurkat cells, K-562 cells

IF/ICC : HeLa cells, NIH/3T3 cells

Background Information

CRKRS (Cdc2-related kinase, Arg/Ser), also named as cyclin-dependent kinase 12 (CKD12), belongs to CDC2/CDKX subfamily. CDK12 can form a heterodimeric complex with its activating partner, cyclin K, to regulate important cellular physiological processes that include transcriptional regulation, regulation of DNA damage repair genes such as BRCA1 and ATM, suppression of intronic polyadenylation, and susceptibility to PARP inhibitors (PMID: 30487607, 24240700, 31694772). CDK12 has 3 isoforms with the calculated molecular mass of 164/163/141 kDa, and the apparent molecular mass of 180-200 kDa due to some modifications (PMID 11683387, 22988298).

Storage

Storage:

Store at -20°C. Stable for one year after shipment.

Storage Buffer:

PBS with 0.02% sodium azide and 50% glycerol, pH7.3

Aliquoting is unnecessary for -20°C storage

For technical support and original validation data for this product please contact:

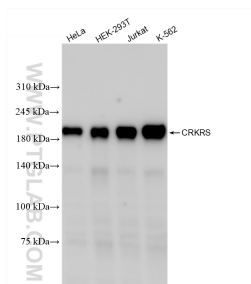
T: 4006900926

E: Proteintech-CN@ptglab.com

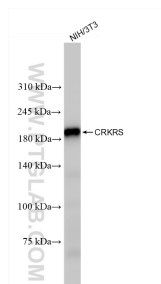
W: ptgcn.com

This product is exclusively available under Proteintech Group brand and is not available to purchase from any other manufacturer.

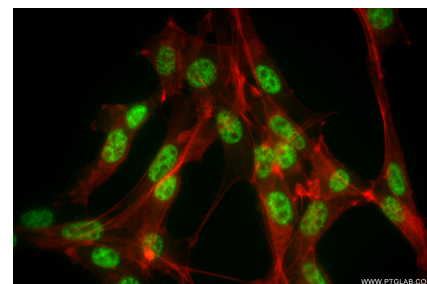
Selected Validation Data



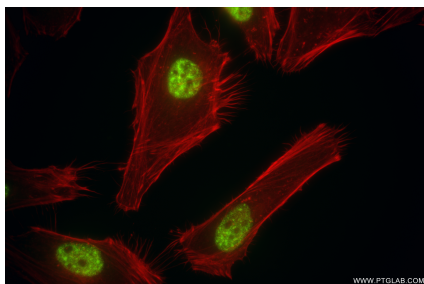
Various lysates were subjected to SDS PAGE followed by western blot with 86296-3-RR (CDK12/CRKRS antibody) at dilution of 1:3000 incubated at room temperature for 1.5 hours.



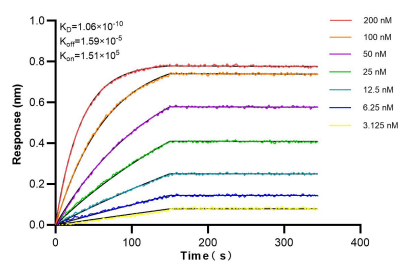
NIH/3T3 cells were subjected to SDS PAGE followed by western blot with 86296-3-RR (CDK12/CRKRS antibody) at dilution of 1:3000 incubated at room temperature for 1.5 hours.



Immunofluorescent analysis of (4% PFA) fixed NIH/3T3 cells using CDK12/CRKRS antibody (86296-3-RR, Clone: 250880E5) at dilution of 1:1000 and CoraLite®488-Conjugated Goat Anti-Rabbit IgG(H+L) (SA00013-2), CL594-Phalloidin (red).



Immunofluorescent analysis of (4% PFA) fixed HeLa cells using CDK12/CRKRS antibody (86296-3-RR, Clone: 250880E5) at dilution of 1:1000 and CoraLite®488-Conjugated Goat Anti-Rabbit IgG(H+L) (SA00013-2), CL594-Phalloidin (red).



Biolayer interferometry (BLI) kinetic assays of 86296-3-RR against Human CDK12/CRKRS were performed. The affinity constant is 0.106 nM.