

For Research Use Only

# CRKRS Recombinant monoclonal antibody, PBS Only (Capture)

Catalog Number:86296-2-PBS



## Basic Information

Catalog Number:

86296-2-PBS

Source:

Rabbit

Isotype:

IgG

Immunogen Catalog Number:

AG25312

GenBank Accession Number:

BC150265

GeneID (NCBI):

51755

UNIPROT ID:

Q9NYV4

Full Name:

Cdc2-related kinase, arginine/serine-rich

Calculated MW:

1490 aa, 164 kDa

Purification Method:

Protein A purification

CloneNo.:

250880H4

## Applications

Tested Applications:

Cytometric bead array, Indirect ELISA

Species Specificity:

human

## Background Information

### Storage

Storage:

Store at -80°C.

**The product is shipped with ice packs. Upon receipt, store it immediately at -80°C**

Storage Buffer:

PBS only, pH7.3

For technical support and original validation data for this product please contact:

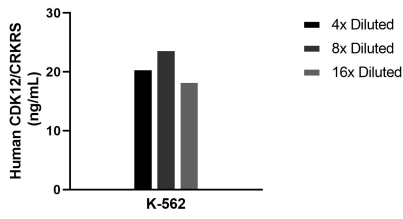
T: 4006900926

E: [Proteintech-CN@ptglab.com](mailto:Proteintech-CN@ptglab.com)

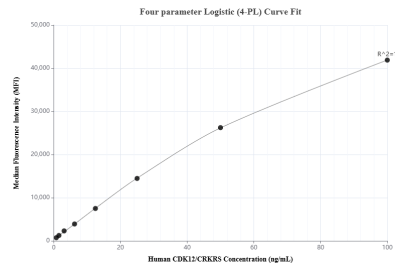
W: [ptgcn.com](http://ptgcn.com)

**This product is exclusively available under Proteintech Group brand and is not available to purchase from any other manufacturer.**

## Selected Validation Data



The mean CDK12/CRKRS concentration was determined to be 20.9 ng/mL in K-562 cell extract based on a 3.0 mg/mL extract load.



Cytometric bead array standard curve of MP02374-1, CDK12/CRKRS Recombinant Matched Antibody Pair, PBS Only. Capture antibody: 86296-2-PBS. Detection antibody: 86296-1-PBS. Standard: Ag25312. Range: 0.781-100 ng/mL