

For Research Use Only

# BCORL1 Recombinant monoclonal antibody, PBS Only (Detector)

Catalog Number:86290-2-PBS



## Basic Information

<b>Catalog Number:</b> 86290-2-PBS	<b>GenBank Accession Number:</b> BC156742	<b>Purification Method:</b> Protein A purification
<b>Source:</b> Rabbit	<b>GeneID (NCBI):</b> 63035	<b>CloneNo.:</b> 251013G12
<b>Isotype:</b> IgG	<b>UNIPROT ID:</b> Q5H9F3	
<b>Immunogen Catalog Number:</b> AG19522	<b>Full Name:</b> BCL6 co-repressor-like 1	
	<b>Calculated MW:</b> 1711 aa, 183 kDa	

## Applications

**Tested Applications:**  
Cytometric bead array, Indirect ELISA

**Species Specificity:**  
human

## Background Information

### Storage

**Storage:**  
Store at -80°C.  
**The product is shipped with ice packs. Upon receipt, store it immediately at -80°C**

**Storage Buffer:**  
PBS only, pH7.3

For technical support and original validation data for this product please contact:

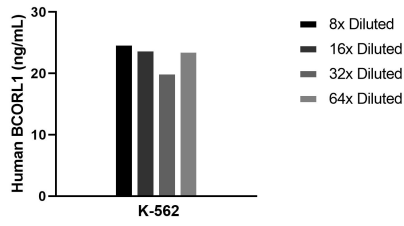
T: 4006900926

E: [Proteintech-CN@ptglab.com](mailto:Proteintech-CN@ptglab.com)

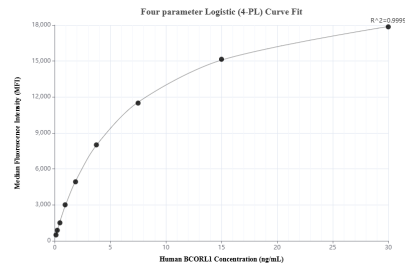
W: [ptgcn.com](http://ptgcn.com)

**This product is exclusively available under Proteintech Group brand and is not available to purchase from any other manufacturer.**

## Selected Validation Data



The mean BCORL1 concentration was determined to be 23.1 ng/mL in K-562 cell extract based on a 3.0 mg/mL extract load.



Cytometric bead array standard curve of MP02366-1, BCORL1 Recombinant Matched Antibody Pair, PBS Only. Capture antibody: 86290-1-PBS. Detection antibody: 86290-2-PBS. Standard: Ag19522. Range: 0.117-30 ng/mL.