

For Research Use Only

BCORL1 Recombinant monoclonal antibody, PBS Only (Capture)

Catalog Number:86290-1-PBS



Basic Information

Catalog Number: 86290-1-PBS	GenBank Accession Number: BC156742	Purification Method: Protein A purification
Source: Rabbit	GeneID (NCBI): 63035	CloneNo.: 251013E2
Isotype: IgG	UNIPROT ID: Q5H9F3	
Immunogen Catalog Number: AG19522	Full Name: BCL6 co-repressor-like 1	
	Calculated MW: 1711 aa, 183 kDa	

Applications

Tested Applications:
IHC, Cytometric bead array, Indirect ELISA

Species Specificity:
human

Background Information

Storage

Storage:
Store at -80°C.
The product is shipped with ice packs. Upon receipt, store it immediately at -80°C

Storage Buffer:
PBS only, pH7.3

For technical support and original validation data for this product please contact:

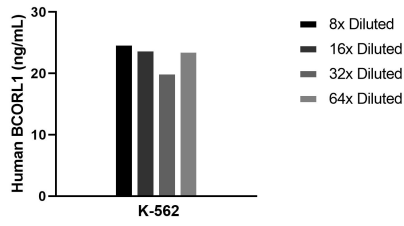
T: 4006900926

E: Proteintech-CN@ptglab.com

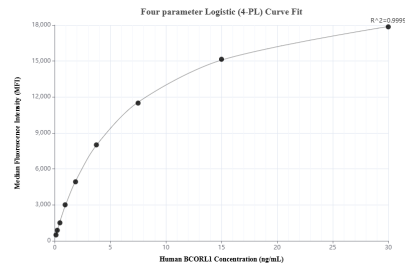
W: ptgcn.com

This product is exclusively available under Proteintech Group brand and is not available to purchase from any other manufacturer.

Selected Validation Data



The mean BCORL1 concentration was determined to be 23.1 ng/mL in K-562 cell extract based on a 3.0 mg/mL extract load.



Cytometric bead array standard curve of MP02366-1, BCORL1 Recombinant Matched Antibody Pair, PBS Only. Capture antibody: 86290-1-PBS. Detection antibody: 86290-2-PBS. Standard: Ag19522. Range: 0.117-30 ng/mL.