

For Research Use Only

# CCL24 Recombinant antibody, PBS Only (Detector)

Catalog Number: 86287-1-PBS



## Basic Information

Catalog Number:

86287-1-PBS

Concentration:

1 mg/ml

Source:

Rabbit

Isotype:

IgG

Immunogen Catalog Number:

EG0395

GenBank Accession Number:

NM\_002991

GeneID (NCBI):

6369

UNIPROT ID:

O00175

Full Name:

chemokine (C-C motif) ligand 24

Calculated MW:

13kd

Purification Method:

Protein A purification

CloneNo.:

243063B11

## Applications

Tested Applications:

Sandwich ELISA, Indirect ELISA, Sample test

Species Specificity:

human

## Background Information

### Storage

Storage:

Store at -80°C.

The product is shipped with ice packs. Upon receipt, store it immediately at -80°C

Storage Buffer:

PBS only, pH7.3

For technical support and original validation data for this product please contact:

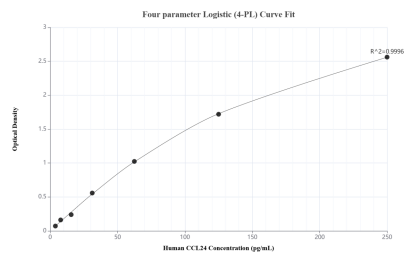
T: 4006900926

E: [Proteintech-CN@ptglab.com](mailto:Proteintech-CN@ptglab.com)

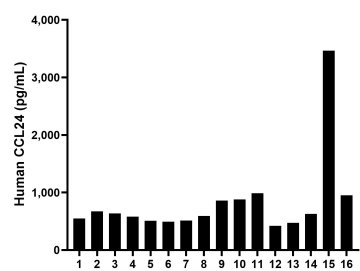
W: [ptgcn.com](http://ptgcn.com)

This product is exclusively available under Proteintech Group brand and is not available to purchase from any other manufacturer.

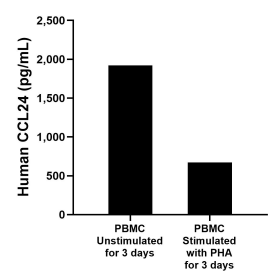
## Selected Validation Data



Sandwich ELISA standard curve of MP02329-1, Human CCL24 Recombinant Matched Antibody Pair - PBS only. 86287-2-PBS was coated to a plate as the capture antibody and incubated with serial dilutions of standard Eg0395. 86287-1-PBS was HRP conjugated as the detection antibody. Range: 3.91-250 pg/mL.



Serum of sixteen individual healthy human donors was measured. The CCL24 concentration of detected samples was determined to be 825.1 pg/mL with a range of 420.9-3,463.9 pg/mL.



Human peripheral blood mononuclear cells (PBMC) were cultured unstimulated or stimulated with 10  $\mu$ g/mL PHA for 3 days. The mean CCL24 concentration was determined to be 1,920.6 pg/mL in unstimulated PBMC supernatant, 673.2 pg/mL in PHA stimulated PBMC supernatant.