

For Research Use Only

Complement C6 Recombinant monoclonal antibody, PBS Only (Detector)

Catalog Number: 86286-4-PBS



Basic Information

Catalog Number: 86286-4-PBS	GenBank Accession Number: BC035723	Purification Method: Protein A purification
Source: Rabbit	GeneID (NCBI): 729	CloneNo.: 250971E10
Isotype: IgG	UNIPROT ID: P13671	
Immunogen Catalog Number: EG4529	Full Name: complement component 6	
	Calculated MW: 934 aa, 105 kDa	

Applications

Tested Applications:
Sandwich ELISA, Indirect ELISA

Species Specificity:
human

Background Information

Storage

Storage:
Store at -80°C.
The product is shipped with ice packs. Upon receipt, store it immediately at -80°C

Storage Buffer:
PBS only, pH7.3

For technical support and original validation data for this product please contact:

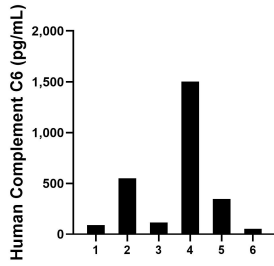
T: 4006900926

E: Proteintech-CN@ptglab.com

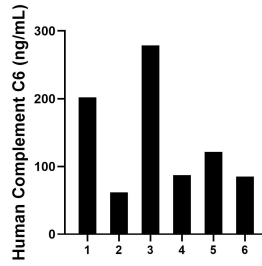
W: ptgcn.com

This product is exclusively available under Proteintech Group brand and is not available to purchase from any other manufacturer.

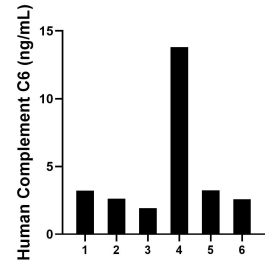
Selected Validation Data



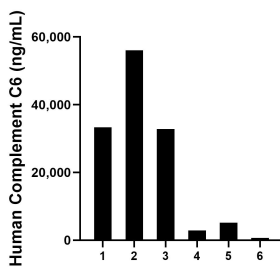
Urine of six individual healthy human donors was measured. The Complement C6 concentration of detected samples was determined to be 443.1 pg/mL with a range of 54.8-1,501.2 pg/mL.



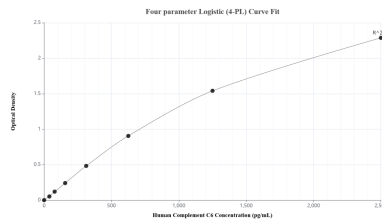
Human milk of six individual healthy female donors was measured. The Complement C6 concentration of detected samples was determined to be 139.3 ng/mL with a range of 61.9-278.6 ng/mL.



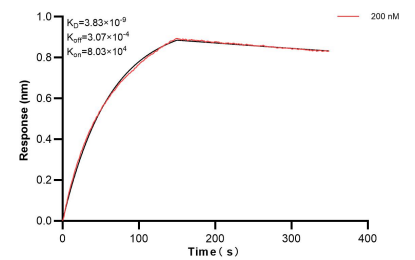
Saliva of six individual healthy female donors was measured. The Complement C6 concentration of detected samples was determined to be 4.6 ng/mL with a range of 1.9-13.8 ng/mL.



Serum of six individual healthy human donors was measured. The Complement C6 concentration of detected samples was determined to be 21,824.0 ng/mL with a range of 676.5-56,025.2 ng/mL.



Sandwich ELISA standard curve of MP02310-2, Human Complement C6 Recombinant Matched Antibody Pair - PBS only. 86286-2-PBS was coated to a plate as the capture antibody and incubated with serial dilutions of standard Eg4529. 86286-4-PBS was HRP conjugated as the detection antibody. Range: 39.1-2500 pg/mL.



Bi-layer interferometry (BLI) kinetic assay of 86286-4-PBS against Human Complement C6 was performed. The affinity constant is 3.83 nM.