

For Research Use Only

# Complement C6 Recombinant monoclonal antibody, PBS Only

Catalog Number: 86286-3-PBS



## Basic Information

Catalog Number:

86286-3-PBS

Concentration:

1000 µg/ml

Source:

Rabbit

Isotype:

IgG

Immunogen Catalog Number:

EG4529

GenBank Accession Number:

BC035723

GeneID (NCBI):

729

UNIPROT ID:

P13671

Full Name:

complement component 6

Calculated MW:

934 aa, 105 kDa

Observed MW:

105-120 kDa

Purification Method:

Protein A purification

CloneNo.:

250971A10

## Applications

Tested Applications:

WB, Indirect ELISA

Species Specificity:

human

## Background Information

The final consequence of complement activation is formation of the membrane attack complex (MAC), a multiprotein assembly that perforates cell membranes, forming transmembrane channels. C6 is 1 of 5 late-acting proteins of complement that participate in assembly and function of the MAC. The deduced C6 protein contains 934 amino acids, including a 21-amino acid N-terminal signal sequence and 2 N-glycosylation sites. Mutations in the C6 gene are associated with complement component-6 deficiency.

## Storage

Storage:

Store at -80°C.

The product is shipped with ice packs. Upon receipt, store it immediately at -80°C

Storage Buffer:

PBS only, pH7.3

For technical support and original validation data for this product please contact:

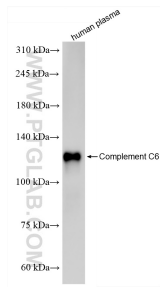
T: 4006900926

E: [Proteintech-CN@ptglab.com](mailto:Proteintech-CN@ptglab.com)

W: [ptgcn.com](http://ptgcn.com)

This product is exclusively available under Proteintech Group brand and is not available to purchase from any other manufacturer.

## Selected Validation Data



human plasma were subjected to SDS PAGE followed by western blot with 86286-3-RR (Complement C6 antibody) at dilution of 1:3000 incubated at room temperature for 1.5 hours. This data was developed using the same antibody clone with 86286-3-PBS in a different storage buffer formulation.