

For Research Use Only

Complement C6 Recombinant antibody, PBS Only (Capture)

Catalog Number: 86286-2-PBS



Basic Information

Catalog Number:

86286-2-PBS

Concentration:

1 mg/ml

Source:

Rabbit

Isotype:

IgG

Immunogen Catalog Number:

EG4529

GenBank Accession Number:

BC035723

GeneID (NCBI):

729

UNIPROT ID:

P13671

Full Name:

complement component 6

Calculated MW:

934 aa, 105 kDa

Purification Method:

Protein A purification

CloneNo.:

250971H5

Applications

Tested Applications:

Cytometric bead array, Indirect ELISA, Sample test

Species Specificity:

human

Background Information

Storage

Storage:

Store at -80°C.

The product is shipped with ice packs. Upon receipt, store it immediately at -80°C

Storage Buffer:

PBS only, pH7.3

For technical support and original validation data for this product please contact:

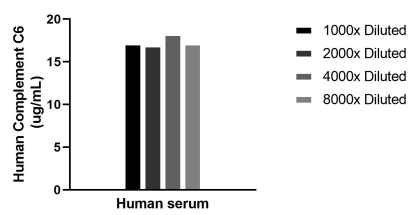
T: 4006900926

E: Proteintech-CN@ptglab.com

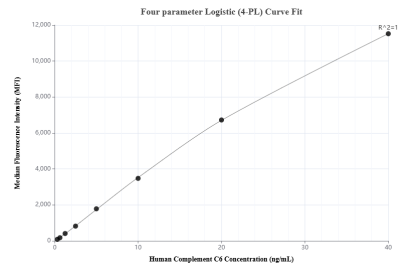
W: ptgcn.com

This product is exclusively available under Proteintech Group brand and is not available to purchase from any other manufacturer.

Selected Validation Data



The mean Complement C6 concentration was determined to be 17.3 ug/mL in human serum.



Cytometric bead array standard curve of MP02310-1, Complement C6 Recombinant Matched Antibody Pair, PBS Only. Capture antibody: 86286-2-PBS. Detection antibody: 86286-1-PBS. Standard: Eg4529. Range: 0.313-40 ng/mL.