

For Research Use Only

GRM1/mGluR1 Recombinant monoclonal antibody

Catalog Number:86280-1-RR



Basic Information

| | | |
|--------------------------------------|---|---|
| Catalog Number: 86280-1-RR | GenBank Accession Number: NM_000838 | Purification Method: Protein A purification |
| Concentration: 1000 µg/ml | GeneID (NCBI): 2911 | CloneNo.: 250635C9 |
| Source: Rabbit | UNIPROT ID: Q13255 | Recommended Dilutions: WB: 1:1000-1:4000 |
| Isotype: IgG | Full Name: glutamate receptor, metabotropic 1 | |
| | Calculated MW: 132 kDa | |
| | Observed MW: 130-140 kDa | |

Applications

| | |
|--|--|
| Tested Applications: WB, ELISA | Positive Controls: WB : rat brain tissue, mouse brain tissue |
| Species Specificity: human, mouse, rat | |

Background Information

GRM1, also named as GPRC1A and MGLUR1, belongs to the G-protein coupled receptor 3 family. GRM1 is a receptor for glutamate. The activity of GRM1 is mediated by a G-protein that activates a phosphatidylinositol-calcium second messenger system. It may participate in the central action of glutamate in the CNS, such as long-term potentiation in the hippocampus and long-term depression in the cerebellum.

Storage

Storage:
Store at -20°C. Stable for one year after shipment.
Storage Buffer:
PBS with 0.02% sodium azide and 50% glycerol, pH7.3
Aliquoting is unnecessary for -20°C storage

For technical support and original validation data for this product please contact:

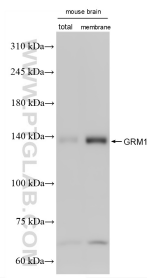
T: 4006900926

E: Proteintech-CN@ptglab.com

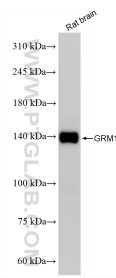
W: ptgcn.com

This product is exclusively available under Proteintech Group brand and is not available to purchase from any other manufacturer.

Selected Validation Data



Various lysates were subjected to SDS PAGE followed by western blot with 86280-1-RR (GRM1/mGluR1 antibody) at dilution of 1:2000 incubated at room temperature for 1.5 hours.



rat brain tissue were subjected to SDS PAGE followed by western blot with 86280-1-RR (GRM1/mGluR1 antibody) at dilution of 1:2000 incubated at room temperature for 1.5 hours.