

For Research Use Only

UBE2T/HSPC150 Recombinant monoclonal antibody

Catalog Number:86278-1-RR



Basic Information

Catalog Number: 86278-1-RR	GenBank Accession Number: BC004152	Purification Method: Protein A purification
Source: Rabbit	GeneID (NCBI): 29089	CloneNo.: 250784D6
Isotype: IgG	UNIPROT ID: Q9NPD8	Recommended Dilutions: WB: 1:1000-1:4000 IHC: 1:500-1:2000
Immunogen Catalog Number: AG0153	Full Name: ubiquitin-conjugating enzyme E2T (putative)	
	Calculated MW: 23 kDa	
	Observed MW: 23 kDa	

Applications

Tested Applications:

WB, IHC, ELISA

Species Specificity:

human

Note-IHC: suggested antigen retrieval with TE buffer pH 9.0; (*) Alternatively, antigen retrieval may be performed with citrate buffer pH 6.0

Positive Controls:

WB : HeLa cells, HepG2 cells, SKOV-3 cells, Jurkat cells, K-562 cells, SW480 cells

IHC : human stomach cancer tissue,

Background Information

ubitin (Ub)-mediated protein degradation pathway involves three sequential enzymatic steps that facilitate the conjugation of Ub to specific protein substrates. The first step requires ATP-dependent activation of the C-terminus of Ub and the assembly of multi-Ubs by Ub-activating enzyme E1. The ubiquitin-conjugating enzyme E2, catalytic (UBC_c) domain, is then conjugated to Ubs, through a thiol-ester linkage between a conserved cysteine and the C-terminus of Ub, to generate an intermediate Ub-E2 complex. Then the E3, a ligase, catalyzes the transfer of Ub from E2 to the appropriate substrate. This pathway regulates many fundamental cellular processes. There are also other E2s which form thiol-ester linkages without the use of E3s as well as several UBC homologs (TSG101, Mms2, Croc-1 and similar proteins), which lack the active site cysteine essential for ubiquitination and appear to function in DNA repair pathways.

Storage

Storage:

Store at -20°C. Stable for one year after shipment.

Storage Buffer:

PBS with 0.02% sodium azide and 50% glycerol, pH7.3

Aliquoting is unnecessary for -20°C storage

For technical support and original validation data for this product please contact:

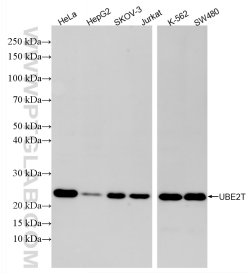
T: 4006900926

E: Proteintech-CN@ptglab.com

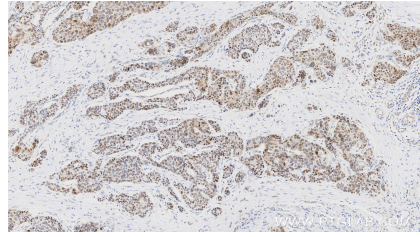
W: ptgcn.com

This product is exclusively available under Proteintech Group brand and is not available to purchase from any other manufacturer.

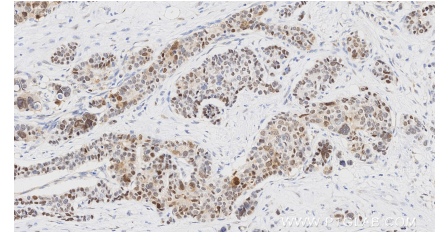
Selected Validation Data



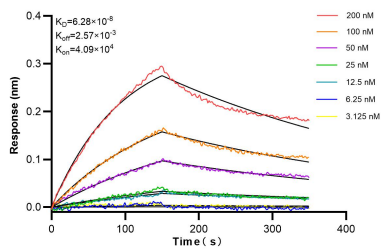
Various lysates were subjected to SDS PAGE followed by western blot with 86278-1-RR (UBE2T antibody) at dilution of 1:2000 incubated at room temperature for 1.5 hours.



Immunohistochemical analysis of paraffin-embedded human stomach cancer tissue slide using 86278-1-RR (UBE2T/HSPC150 antibody) at dilution of 1:1000 (under 10x lens). Heat mediated antigen retrieval with Tris-EDTA buffer (pH 9.0).



Immunohistochemical analysis of paraffin-embedded human stomach cancer tissue slide using 86278-1-RR (UBE2T/HSPC150 antibody) at dilution of 1:1000 (under 20x lens). Heat mediated antigen retrieval with Tris-EDTA buffer (pH 9.0).



Biolayer interferometry (BLI) kinetic assays of 86278-1-RR against Human UBE2T/HSPC150 were performed. The affinity constant is 62.8 nM.