

For Research Use Only

HSPD1 Recombinant antibody, PBS Only (Detector)

Catalog Number: 86275-2-PBS



Basic Information

Catalog Number:

86275-2-PBS

Concentration:

1 mg/ml

Source:

Rabbit

Isotype:

IgG

Immunogen Catalog Number:

AG7401

GenBank Accession Number:

BC003030

GeneID (NCBI):

3329

UNIPROT ID:

P10809

Full Name:

heat shock 60kDa protein 1
(chaperonin)

Calculated MW:

61 kDa

Purification Method:

Protein A purification

CloneNo.:

250248D10

Applications

Tested Applications:

Sandwich ELISA, Indirect ELISA, Sample test

Species Specificity:

human

Background Information

Storage

Storage:

Store at -80°C.

The product is shipped with ice packs. Upon receipt, store it immediately at -80°C

Storage Buffer:

PBS only, pH7.3

For technical support and original validation data for this product please contact:

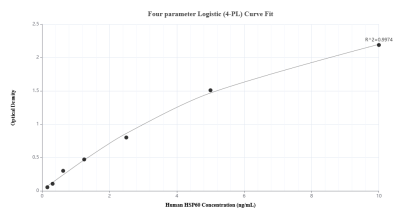
T: 4006900926

E: Proteintech-CN@ptglab.com

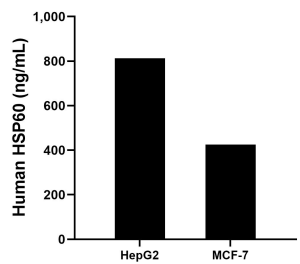
W: ptgcn.com

This product is exclusively available under Proteintech Group brand and is not available to purchase from any other manufacturer.

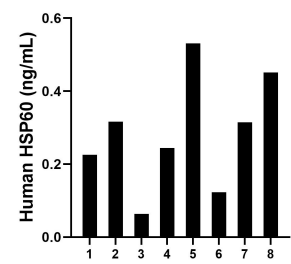
Selected Validation Data



Sandwich ELISA standard curve of MP02453-1, Human HSP60 Recombinant Matched Antibody Pair - PBS only. 86275-3-PBS was coated to a plate as the capture antibody and incubated with serial dilutions of standard Ag7401. 86275-2-PBS was HRP conjugated as the detection antibody. Range: 0.156-10 ng/mL



The mean TMEM66 concentration was determined to be 813.56 ng/mL in HepG2 cell extract based on a 1.1 mg/mL extract load and 425.61 ng/mL in MCF-7 cell extract based on a 1.2 mg/mL extract load.



Plasma of eight individual healthy human donors was measured. The human HSP60 concentration of detected samples was determined to be 0.28 ng/mL with a range of 0.06 - 0.53 ng/mL.