

For Research Use Only

# HSP60 Recombinant monoclonal antibody, PBS Only

Catalog Number: 86275-1-PBS

Featured Product



## Basic Information

Catalog Number:

86275-1-PBS

Source:

Rabbit

Isotype:

IgG

Immunogen Catalog Number:

AG7401

GenBank Accession Number:

BC003030

GeneID (NCBI):

3329

UNIPROT ID:

P10809

Full Name:

heat shock 60kDa protein 1  
(chaperonin)

Calculated MW:

61 kDa

Observed MW:

60 kDa

Purification Method:

Protein A purification

CloneNo.:

250248D1

## Applications

Tested Applications:

WB, IF/ICC, Indirect ELISA

Species Specificity:

human

## Background Information

HSPD1, also known as HSP60, belongs to the chaperonin family and acts as a chaperone to enhance cell survival under physiological stresses. Hsp60 has been shown to be connected with many aspects of cell functions such as protein folding and assembling of polypeptide chains in mitochondria. Recently it has been reported that HSP60 is associated with apoptosis or inhibition of cancer cell growth. (21822415)

## Storage

Storage:

Store at -80°C.

**The product is shipped with ice packs. Upon receipt, store it immediately at -80°C**

Storage Buffer:

PBS only, pH7.3

For technical support and original validation data for this product please contact:

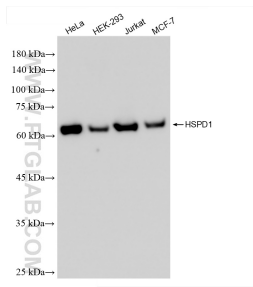
T: 4006900926

E: [Proteintech-CN@ptglab.com](mailto:Proteintech-CN@ptglab.com)

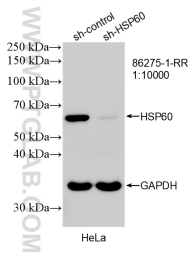
W: [ptgcn.com](http://ptgcn.com)

**This product is exclusively available under Proteintech Group brand and is not available to purchase from any other manufacturer.**

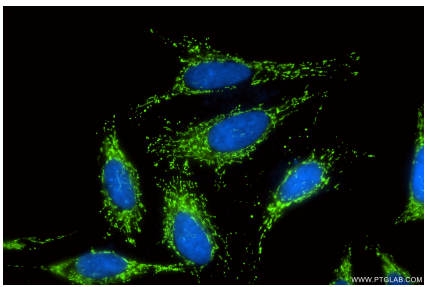
## Selected Validation Data



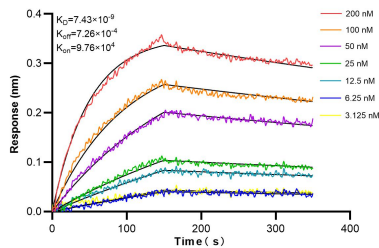
Various lysates were subjected to SDS PAGE followed by western blot with 86275-1-RR (HSP60 antibody) at dilution of 1:5000 incubated at room temperature for 1.5 hours. This data was developed using the same antibody clone with 86275-1-PBS in a different storage buffer formulation.



WB result of HSP60 antibody (86275-1-RR; 1:10000; incubated at room temperature for 1.5 hours) with sh-Control and sh-HSP60 transfected HeLa cells. This data was developed using the same antibody clone with 86275-1-PBS in a different storage buffer formulation.



Immunofluorescent analysis of (-20°C Methanol) fixed HeLa cells using HSP60 antibody (86275-1-RR, Clone: 250248D1 ) at dilution of 1:800 and CoraLite®488-Conjugated Goat Anti-Rabbit IgG(H+L) (SA00013-2). This data was developed using the same antibody clone with 86275-1-PBS in a different storage buffer formulation.



Biolayer interferometry (BLI) kinetic assays of 86275-1-RR against Human HSP60 were performed. The affinity constant is 7.43 nM.