

For Research Use Only

CCDC109A Recombinant antibody, PBS Only (Capture)

Catalog Number: 86274-2-PBS



Basic Information

Catalog Number:	86274-2-PBS	GenBank Accession Number:	BC034235	Purification Method:	Protein A purification
Concentration:	1 mg/ml	GeneID (NCBI):	90550	CloneNo.:	250879B8
Source:	Rabbit	UNIPROT ID:	Q8NE86		
Isotype:	IgG	Full Name:	coiled-coil domain containing 109A		
Immunogen Catalog Number:	AG24733	Calculated MW:	35 kDa		

Applications

Tested Applications:
Sandwich ELISA, Indirect ELISA, Sample test

Species Specificity:
human

Background Information

Storage

Storage:
Store at -80°C.
The product is shipped with ice packs. Upon receipt, store it immediately at -80°C

Storage Buffer:
PBS only, pH7.3

For technical support and original validation data for this product please contact:

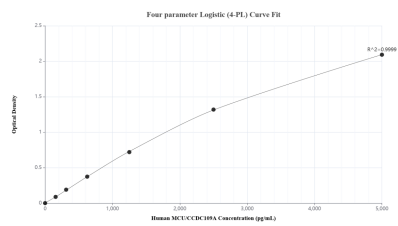
T: 4006900926

E: Proteintech-CN@ptglab.com

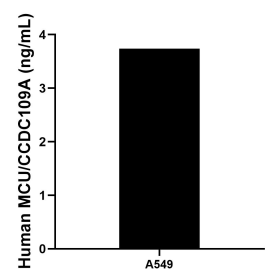
W: ptgcn.com

This product is exclusively available under Proteintech Group brand and is not available to purchase from any other manufacturer.

Selected Validation Data



Sandwich ELISA standard curve of MP02568-1, Human MCU/CCDC109A Recombinant Matched Antibody Pair - PBS only. 86274-2-PBS was coated to a plate as the capture antibody and incubated with serial dilutions of standard Ag24733. 86274-3-PBS was HRP conjugated as the detection antibody. Range: 156-5000 pg/mL



The mean MCU/CCDC109A concentration was determined to be 3.7 ng/mL in A549 cell extract based on a 1.1 mg/mL extract load.