

For Research Use Only

# MCU/CCDC109A Recombinant antibody, PBS Only

Catalog Number: 86274-1-PBS



## Basic Information

Catalog Number:

86274-1-PBS

Concentration:

1 mg/ml

Source:

Rabbit

Isotype:

IgG

Immunogen Catalog Number:

AG24733

GenBank Accession Number:

BC034235

GeneID (NCBI):

90550

UNIPROT ID:

Q8NE86

Full Name:

coiled-coil domain containing 109A

Calculated MW:

35 kDa

Observed MW:

30-35 kDa

Purification Method:

Protein A purification

CloneNo.:

250879C3

## Applications

Tested Applications:

WB, Indirect ELISA

Species Specificity:

human, mouse

## Background Information

MCU, also known as CCDC109A, is highly conserved across all eukaryotes. The MCU protein is composed of two coiled-coil domains, two TMDs, and a short motif of amino acids between the two TMDs. Knockdown of MCU dramatically reduces mitochondrial Ca<sup>2+</sup> uptake in isolated mitochondria, in permeabilized cells and living cells. MCU has 3 isoforms with MW 40,37 and 35 kDa (refer to UniProt). The observed MW of MCU is mainly between 30 to 35 kDa in paper (PMID: 26341627; 28337252).

## Storage

Storage:

Store at -80°C.

**The product is shipped with ice packs. Upon receipt, store it immediately at -80°C**

Storage Buffer:

PBS only, pH7.3

For technical support and original validation data for this product please contact:

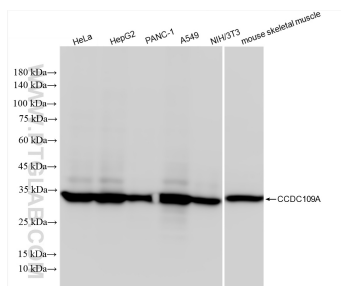
T: 4006900926

E: Proteintech-CN@ptglab.com

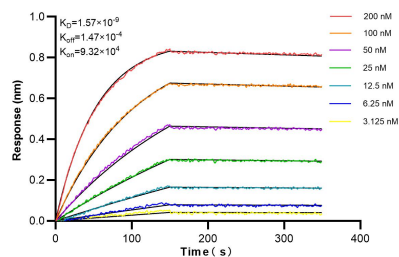
W: ptgcn.com

**This product is exclusively available under Proteintech Group brand and is not available to purchase from any other manufacturer.**

## Selected Validation Data



Various lysates were subjected to SDS PAGE followed by western blot with 86274-1-RR (CCDC109A antibody) at dilution of 1:10000 incubated at room temperature for 1.5 hours. This data was developed using the same antibody clone with 86274-1-PBS in a different storage buffer formulation.



Biolayer interferometry (BLI) kinetic assays of 86274-1-RR against Human MCU/CCDC109A were performed. The affinity constant is 1.57 nM.