

For Research Use Only

# RPL7A Recombinant monoclonal antibody

Catalog Number:86270-3-RR



## Basic Information

<b>Catalog Number:</b> 86270-3-RR	<b>GenBank Accession Number:</b> BC005128	<b>Purification Method:</b> Protein A purification
<b>Source:</b> Rabbit	<b>GeneID (NCBI):</b> 6130	<b>CloneNo.:</b> 250886D4
<b>Isotype:</b> IgG	<b>UNIPROT ID:</b> P62424	<b>Recommended Dilutions:</b> WB: 1:5000-1:50000 IF/ICC: 1:200-1:800
<b>Immunogen Catalog Number:</b> AG7543	<b>Full Name:</b> ribosomal protein L7a	
	<b>Calculated MW:</b> 266 aa, 30 kDa	
	<b>Observed MW:</b> 30-32 kDa	

## Applications

<b>Tested Applications:</b> WB, IF/ICC, ELISA	<b>Positive Controls:</b>
<b>Species Specificity:</b> human, mouse, rat	<b>WB :</b> K-562 cells, MCF-7 cells, HeLa cells, HEK-293T cells, Jurkat cells, mouse kidney tissue, rat kidney tissue
	<b>IF/ICC :</b> HeLa cells,

## Background Information

Ribosomal proteins are a major component of ribosomes, which catalyze protein synthesis. RPL7a, which is a component of the 60S large ribosomal subunit, has additional functions involved in cell growth and differentiation that occur via interaction with human thyroid hormone receptor (THR) and retinoic acid receptor (RAR) and in turn inhibit the activities of the two nuclear hormone receptors [PMID:21505254].

## Storage

**Storage:**  
Store at -20°C. Stable for one year after shipment.  
**Storage Buffer:**  
PBS with 0.02% sodium azide and 50% glycerol, pH7.3  
Aliquoting is unnecessary for -20°C storage

For technical support and original validation data for this product please contact:

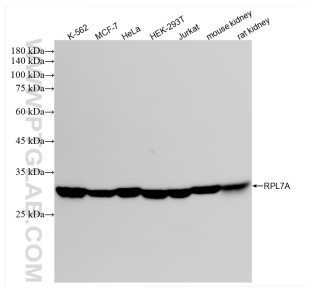
T: 4006900926

E: [Proteintech-CN@ptglab.com](mailto:Proteintech-CN@ptglab.com)

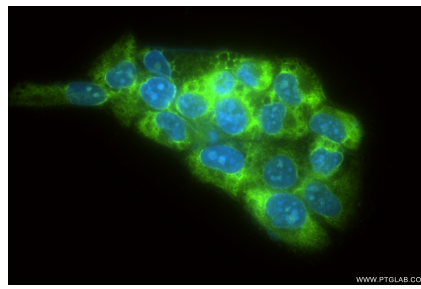
W: [ptgcn.com](http://ptgcn.com)

**This product is exclusively available under Proteintech Group brand and is not available to purchase from any other manufacturer.**

## Selected Validation Data



Various lysates were subjected to SDS PAGE followed by western blot with 86270-3-RR (RPL7A antibody) at dilution of 1:10000 incubated at room temperature for 1.5 hours.



Immunofluorescent analysis of (-20°C Methanol) fixed HeLa cells using RPL7A antibody (86270-3-RR, Clone: 250886D4) at dilution of 1:400 and CoraLite® 488-Conjugated Goat Anti-Rabbit IgG(H+L) (SA00013-2).