

For Research Use Only

LAMP2/ CD107b Recombinant monoclonal antibody, PBS Only (Capture)

Catalog Number: 86269-5-PBS



Basic Information

Catalog Number: 86269-5-PBS	GenBank Accession Number: NM_002294.3	Purification Method: Protein A purification
Source: Rabbit	GeneID (NCBI): 3920	CloneNo.: 250948G6
Isotype: IgG	ENSEMBL Gene ID: ENSG00000005893	
Immunogen Catalog Number: EG4998	UNIPROT ID: P13473-1	
	Full Name: lysosomal-associated membrane protein 2	
	Calculated MW: 45 kDa	

Applications

Tested Applications:
Sandwich ELISA, Indirect ELISA

Species Specificity:
human

Background Information

Storage

Storage:
Store at -80°C.
The product is shipped with ice packs. Upon receipt, store it immediately at -80°C

Storage Buffer:
PBS only, pH7.3

For technical support and original validation data for this product please contact:

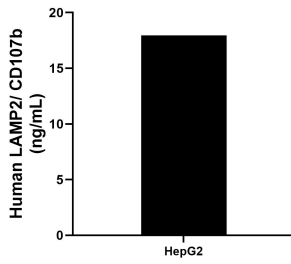
T: 4006900926

E: Proteintech-CN@ptglab.com

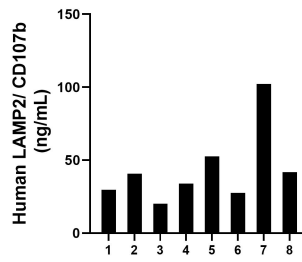
W: ptgcn.com

This product is exclusively available under Proteintech Group brand and is not available to purchase from any other manufacturer.

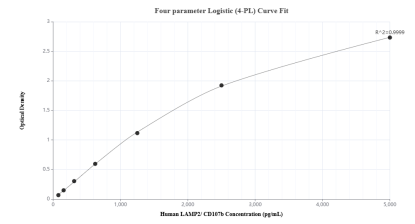
Selected Validation Data



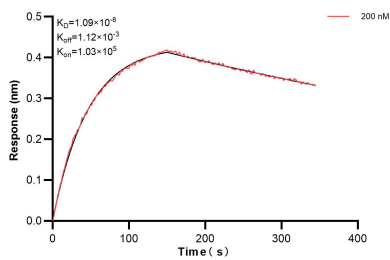
The mean LAMP2/ CD107b concentration was determined to be 17.96 ng/mL in HepG2 cell extract based on a 1.3 mg/mL extract load.



Plasma of eight individual healthy human donors was measured. The human LAMP2/ CD107b concentration of detected samples was determined to be 43.54 ng/mL with a range of 20.21 - 102.18 ng/mL.



Sandwich ELISA standard curve of MP02321-2, Human LAMP2/ CD107b Recombinant Matched Antibody Pair - PBS only. 86269-5-PBS was coated to a plate as the capture antibody and incubated with serial dilutions of standard Eg4998. 86269-4-PBS was HRP conjugated as the detection antibody. Range: 78.1-5000 pg/mL



Biolayer interferometry (BLI) kinetic assays of 86269-5-PBS against Human LAMP2/ CD107b were performed. The affinity constant is 10.9 nM.