

For Research Use Only

# LAMP2/ CD107b Recombinant monoclonal antibody, PBS Only (Detector)

Catalog Number: 86269-4-PBS



## Basic Information

<b>Catalog Number:</b> 86269-4-PBS	<b>GenBank Accession Number:</b> NM_002294.3	<b>Purification Method:</b> Protein A purification
<b>Source:</b> Rabbit	<b>GeneID (NCBI):</b> 3920	<b>CloneNo.:</b> 250948E6
<b>Isotype:</b> IgG	<b>ENSEMBL Gene ID:</b> ENSG00000005893	
<b>Immunogen Catalog Number:</b> EG4998	<b>UNIPROT ID:</b> P13473-1	
	<b>Full Name:</b> lysosomal-associated membrane protein 2	
	<b>Calculated MW:</b> 45 kDa	

## Applications

**Tested Applications:**  
Sandwich ELISA, Indirect ELISA

**Species Specificity:**  
human

## Background Information

### Storage

**Storage:**  
Store at -80°C.  
**The product is shipped with ice packs. Upon receipt, store it immediately at -80°C**

**Storage Buffer:**  
PBS only, pH7.3

For technical support and original validation data for this product please contact:

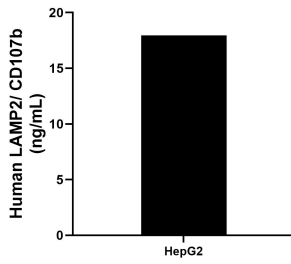
T: 4006900926

E: [Proteintech-CN@ptglab.com](mailto:Proteintech-CN@ptglab.com)

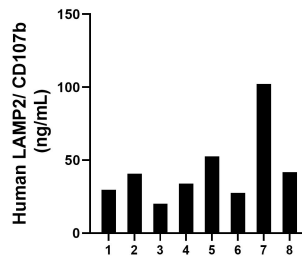
W: [ptgcn.com](http://ptgcn.com)

**This product is exclusively available under Proteintech Group brand and is not available to purchase from any other manufacturer.**

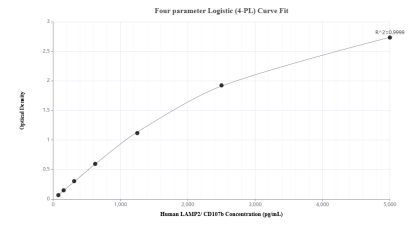
## Selected Validation Data



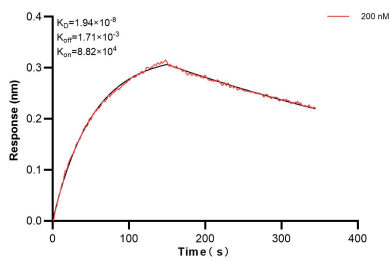
The mean LAMP2/ CD107b concentration was determined to be 17.96 ng/mL in HepG2 cell extract based on a 1.3 mg/mL extract load.



Plasma of eight individual healthy human donors was measured. The human LAMP2/ CD107b concentration of detected samples was determined to be 43.54 ng/mL with a range of 20.21 - 102.18 ng/mL.



Sandwich ELISA standard curve of MP02321-2, Human LAMP2/ CD107b Recombinant Matched Antibody Pair - PBS only. 86269-5-PBS was coated to a plate as the capture antibody and incubated with serial dilutions of standard Eg4998. 86269-4-PBS was HRP conjugated as the detection antibody. Range: 78.1-5000 pg/mL



Biolayer interferometry (BLI) kinetic assays of 86269-4-PBS against Human LAMP2/ CD107b were performed. The affinity constant is 19.4 nM.