

For Research Use Only

# LAMP2/ CD107b Recombinant antibody, PBS Only (Capture)

Catalog Number: 86269-2-PBS



## Basic Information

Catalog Number:

86269-2-PBS

Concentration:

1 mg/ml

Source:

Rabbit

Isotype:

IgG

Immunogen Catalog Number:

EG4998

GenBank Accession Number:

NM\_002294.3

GeneID (NCBI):

3920

ENSEMBL Gene ID:

ENSG00000005893

UNIPROT ID:

P13473-1

Full Name:

lysosomal-associated membrane protein 2

Calculated MW:

45 kDa

Purification Method:

Protein A purification

CloneNo.:

250948A6

## Applications

Tested Applications:

Cytometric bead array, Indirect ELISA, Sample test

Species Specificity:

human

## Background Information

### Storage

Storage:

Store at -80°C.

The product is shipped with ice packs. Upon receipt, store it immediately at -80°C

Storage Buffer:

PBS only, pH7.3

For technical support and original validation data for this product please contact:

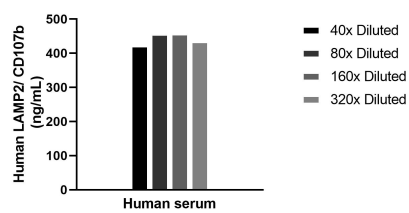
T: 4006900926

E: [Proteintech-CN@ptglab.com](mailto:Proteintech-CN@ptglab.com)

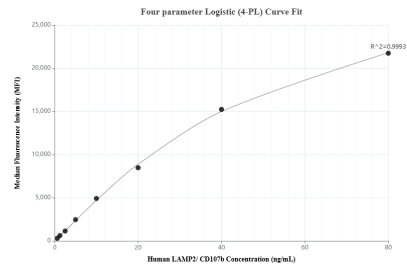
W: [ptgcn.com](http://ptgcn.com)

This product is exclusively available under Proteintech Group brand and is not available to purchase from any other manufacturer.

## Selected Validation Data



The mean LAMP2/ CD107b concentration was determined to be 442.5 ng/mL in human serum.



Cytometric bead array standard curve of MP02321-1, LAMP2/ CD107b Recombinant Matched Antibody Pair, PBS Only. Capture antibody: 86269-2-PBS. Detection antibody: 86269-1-PBS. Standard: Eg4998. Range: 0.625-80 ng/mL.