

For Research Use Only

# KIF2A Recombinant antibody, PBS Only

Catalog Number:86268-3-PBS



## Basic Information

<b>Catalog Number:</b> 86268-3-PBS	<b>GenBank Accession Number:</b> BC031828	<b>Purification Method:</b> Protein A purification
<b>Concentration:</b> 1 mg/ml	<b>GeneID (NCBI):</b> 3796	<b>CloneNo.:</b> 250946C7
<b>Source:</b> Rabbit	<b>UNIPROT ID:</b> O00139	
<b>Isotype:</b> IgG	<b>Full Name:</b> kinesin heavy chain member 2A	
<b>Immunogen Catalog Number:</b> AG3748	<b>Calculated MW:</b> 679 aa, 77 kDa	
	<b>Observed MW:</b> 80-100 kDa	

## Applications

**Tested Applications:**  
WB, Indirect ELISA

**Species Specificity:**  
human, mouse, rat

## Background Information

Kinesin family member 2a (KIF2A), one of the kinesin family members, is identified in mammalian cells and involved in regulating microtubule dynamics during the mitosis via modulating intracellular transport, cell division, and bipolar spindle assembly (PMID: 17538014). High expression of KIF2A correlates with advanced tumor stages and worse prognosis in non-small cell lung cancer patients (PMID: 31858647). Within clinical practice, KIF2A exhibits key prognostic value for the management of gastric cancer, colorectal cancer and nasopharyngeal carcinoma (PMID: 32106376, PMID: 26070867, PMID: 26602436).

## Storage

**Storage:**  
Store at -80°C.  
**The product is shipped with ice packs. Upon receipt, store it immediately at -80°C**

**Storage Buffer:**  
PBS only, pH7.3

For technical support and original validation data for this product please contact:

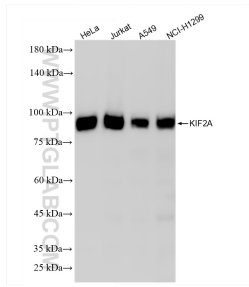
T: 4006900926

E: [Proteintech-CN@ptglab.com](mailto:Proteintech-CN@ptglab.com)

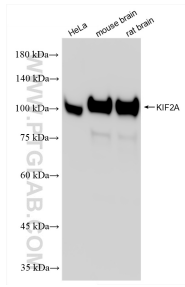
W: [ptgcn.com](http://ptgcn.com)

**This product is exclusively available under Proteintech Group brand and is not available to purchase from any other manufacturer.**

## Selected Validation Data



Various lysates were subjected to SDS PAGE followed by western blot with 86268-3-RR (KIF2A antibody) at dilution of 1:20000 incubated at room temperature for 1.5 hours. This data was developed using the same antibody clone with 86268-3-PBS in a different storage buffer formulation.



Various lysates were subjected to SDS PAGE followed by western blot with 86268-3-RR (KIF2A antibody) at dilution of 1:20000 incubated at room temperature for 1.5 hours. This data was developed using the same antibody clone with 86268-3-PBS in a different storage buffer formulation.