

For Research Use Only

KIF2A Recombinant antibody, PBS Only (Capture)

Catalog Number: 86268-2-PBS



Basic Information

Catalog Number:

86268-2-PBS

Concentration:

1 mg/ml

Source:

Rabbit

Isotype:

IgG

Immunogen Catalog Number:

AG3748

GenBank Accession Number:

BC031828

GeneID (NCBI):

3796

UNIPROT ID:

O00139

Full Name:

kinesin heavy chain member 2A

Calculated MW:

679 aa, 77 kDa

Purification Method:

Protein A purification

CloneNo.:

250946A6

Applications

Tested Applications:

Cytometric bead array, Indirect ELISA, Sample test

Species Specificity:

human

Background Information

Storage

Storage:

Store at -80°C.

The product is shipped with ice packs. Upon receipt, store it immediately at -80°C

Storage Buffer:

PBS only, pH7.3

For technical support and original validation data for this product please contact:

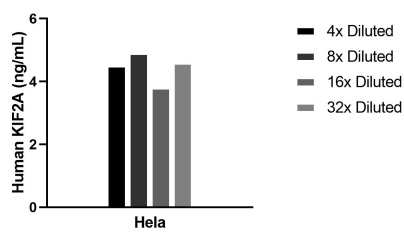
T: 4006900926

E: Proteintech-CN@ptglab.com

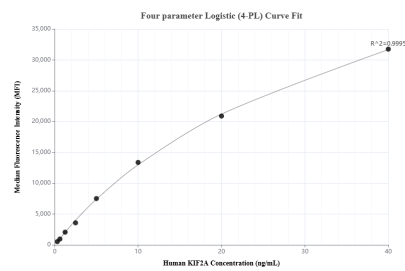
W: ptgcn.com

This product is exclusively available under Proteintech Group brand and is not available to purchase from any other manufacturer.

Selected Validation Data



The mean KIF2A concentration was determined to be 4.4 ng/mL in HeLa cell extract based on a 0.9 mg/mL extract load.



Cytometric bead array standard curve of MP02320-1, KIF2A Recombinant Matched Antibody Pair, PBS Only. Capture antibody: 86268-2-PBS. Detection antibody: 86268-1-PBS. Standard: Ag3748. Range: 0.313-40 ng/mL.