

For Research Use Only

# Mouse Armetl1 Recombinant antibody, PBS Only (Detector)

Catalog Number:86264-1-PBS



## Basic Information

Catalog Number:

86264-1-PBS

Concentration:

1 mg/ml

Source:

Rabbit

Isotype:

IgG

Immunogen Catalog Number:

EG2845

GenBank Accession Number:

NM\_177647.4

GeneID (NCBI):

227526

UNIPROT ID:

Q8CC36

Full Name:

arginine-rich, mutated in early stage  
tumors-like 1

Calculated MW:

21 kDa

Observed MW:

16-21 kDa

Purification Method:

Protein A purification

CloneNo.:

250599B3

## Applications

Tested Applications:

WB, Sandwich ELISA, Indirect ELISA, Sample test

Species Specificity:

mouse

## Background Information

### Storage

Storage:

Store at -80°C.

The product is shipped with ice packs. Upon receipt, store it immediately at -80°C

Storage Buffer:

PBS only, pH7.3

For technical support and original validation data for this product please contact:

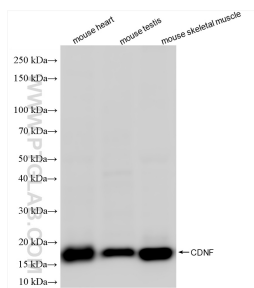
T: 4006900926

E: Proteintech-CN@ptglab.com

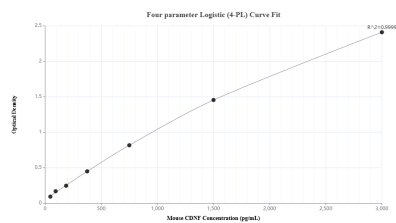
W: ptgcn.com

This product is exclusively available under Proteintech Group brand and is not available to purchase from any other manufacturer.

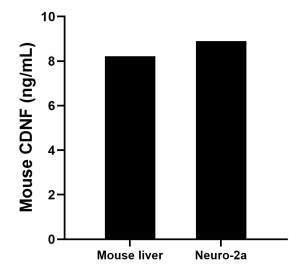
## Selected Validation Data



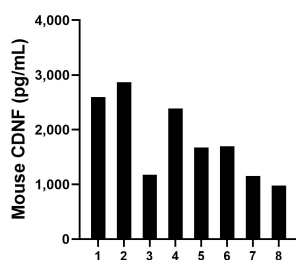
Various lysates were subjected to SDS PAGE followed by western blot with 86264-1-RR (Armetl1 antibody) at dilution of 1:2000 incubated at room temperature for 1.5 hours. This data was developed using the same antibody clone with 86264-1-PBS in a different storage buffer formulation.



Sandwich ELISA standard curve of MP02479-1, Mouse CDNF Recombinant Matched Antibody Pair - PBS only. 86264-2-PBS was coated to a plate as the capture antibody and incubated with serial dilutions of standard Eg2845. 86264-1-PBS was HRP conjugated as the detection antibody. Range: 46.9-3000 pg/mL



The mean CDNF concentration was determined to be 9.22 ng/mL in mouse liver tissue extract based on a 8.4 mg/mL extract load and 8.90 ng/mL in Neuro-2a cell extract based on a 1.6 mg/mL extract load.



Serum of eight mice was measured. The mouse CDNF concentration of detected samples was determined to be 1,814.8 pg/mL with a range of 975.9 - 2,868.5 pg/mL.