

For Research Use Only

RTCB Recombinant monoclonal antibody

Catalog Number: 86258-4-RR



Basic Information

Catalog Number: 86258-4-RR	GenBank Accession Number: BC000151	Purification Method: Protein A purification
Concentration: 1000 µg/ml	GeneID (NCBI): 51493	CloneNo.: 250866B2
Source: Rabbit	UNIPROT ID: Q9Y3I0	Recommended Dilutions: WB: 1:5000-1:50000 IF/ICC: 1:250-1:1000
Isotype: IgG	Full Name: chromosome 22 open reading frame 28	
Immunogen Catalog Number: AG13836	Calculated MW: 55 kDa	
	Observed MW: 55 kDa	

Applications

Tested Applications: WB, IF/ICC, ELISA	Positive Controls:
Species Specificity: human, mouse, rat	WB : Jurkat cells, HeLa cells, HEK-293T cells, 3T3-L1 cells, mouse brain tissue, rat brain tissue
	IF/ICC : Jurkat cells,

Background Information

RTCB (also known as HSPC117, C22orf28, FAAP and D10Wsu52e) is an essential subunit of a tRNA ligase complex that is involved in RNA repair and stress-induced splicing. As a multifunctional protein, RTCB is also a cell adhesion protein and is important in embryo and placenta development. Recently RTCB has been identified as UPR RNA ligase catalyzing unconventional XBP1 mRNA splicing. This antibody specifically recognizes endogenous RTCB protein. (25087875)

Storage

Storage:
Store at -20°C. Stable for one year after shipment.
Storage Buffer:
PBS with 0.02% sodium azide and 50% glycerol, pH7.3
Aliquoting is unnecessary for -20°C storage

For technical support and original validation data for this product please contact:

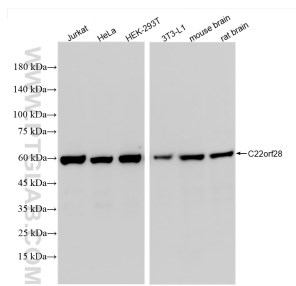
T: 4006900926

E: Proteintech-CN@ptglab.com

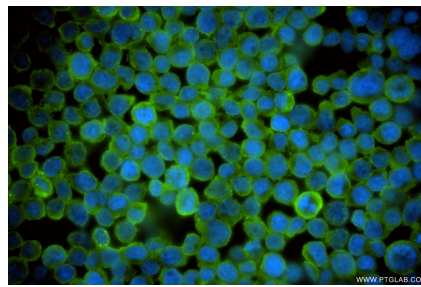
W: ptgcn.com

This product is exclusively available under Proteintech Group brand and is not available to purchase from any other manufacturer.

Selected Validation Data



Various lysates were subjected to SDS PAGE followed by western blot with 86258-4-RR (C22orf28 antibody) at dilution of 1:10000 incubated at room temperature for 1.5 hours.



Immunofluorescent analysis of (4% PFA) fixed Jurkat cells using RTCB antibody (86258-4-RR, Clone: 250866B2) at dilution of 1:500 and CoraLite® 488-Conjugated Goat Anti-Rabbit IgG(H+L) (SA00013-2).