

For Research Use Only

C22orf28 Recombinant antibody, PBS Only (Capture)

Catalog Number: 86258-2-PBS



Basic Information

Catalog Number:

86258-2-PBS

Concentration:

1 mg/ml

Source:

Rabbit

Isotype:

IgG

Immunogen Catalog Number:

AG13836

GenBank Accession Number:

BC000151

GeneID (NCBI):

51493

UNIPROT ID:

Q9Y3I0

Full Name:

chromosome 22 open reading frame

28

Calculated MW:

55 kDa

Purification Method:

Protein A purification

CloneNo.:

250866G12

Applications

Tested Applications:

Cytometric bead array, Indirect ELISA, Sample test

Species Specificity:

human

Background Information

Storage

Storage:

Store at -80°C.

The product is shipped with ice packs. Upon receipt, store it immediately at -80°C

Storage Buffer:

PBS only, pH7.3

For technical support and original validation data for this product please contact:

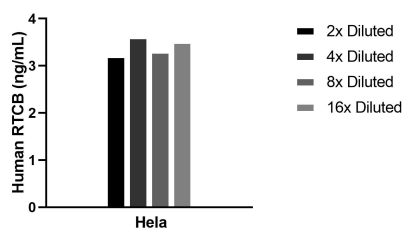
T: 4006900926

E: Proteintech-CN@ptglab.com

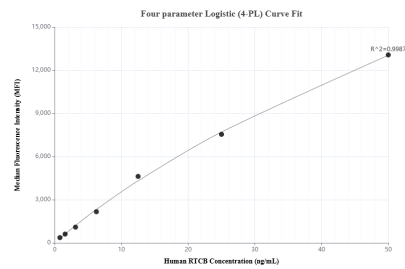
W: ptgcn.com

This product is exclusively available under Proteintech Group brand and is not available to purchase from any other manufacturer.

Selected Validation Data



The mean RTCB concentration was determined to be 3.4 ng/mL in HeLa cell extract based on a 0.9 mg/mL extract load.



Cytometric bead array standard curve of MP02340-1, RTCB Recombinant Matched Antibody Pair, PBS Only. Capture antibody: 86258-2-PBS. Detection antibody: 86258-1-PBS. Standard: Ag13836. Range: 0.781-50 ng/mL.