

For Research Use Only

Rat CD86 Recombinant antibody, PBS Only (Detector)

Catalog Number: 86252-1-PBS



Basic Information

Catalog Number:	GenBank Accession Number:	Purification Method:
86252-1-PBS	NM_020081.1	Protein A purification
Concentration:	GeneID (NCBI):	CloneNo.:
1 mg/ml	56822	250726D3
Source:	UNIPROT ID:	
Rabbit	O35531	
Isotype:	Full Name:	
IgG	CD86 molecule	
Immunogen Catalog Number:	Calculated MW:	
EG3586	36 kDa	

Applications

Tested Applications:
WB, Cytometric bead array, Indirect ELISA, Sample test

Species Specificity:
rat

Background Information

CD86 (also known as B7-2) is a costimulatory molecule belonging to the immunoglobulin superfamily. Primarily expressed on antigen-presenting cells (APCs), including B cells, dendritic cells, and macrophages, CD86 is the ligand for two proteins at the cell surface of T cells, CD28 antigen and CTLA-4. Binding of CD86 with CD28 antigen is a costimulatory signal for activation of the T-cell. Binding of CD86 with CTLA-4 negatively regulates T-cell activation and diminishes the immune response. (PMID: 7513726; 1847722; 11029388; 27591335)

Storage

Storage:
Store at -80°C.
The product is shipped with ice packs. Upon receipt, store it immediately at -80°C
Storage Buffer:
PBS only, pH7.3

For technical support and original validation data for this product please contact:

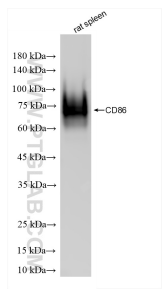
T: 4006900926

E: Proteintech-CN@ptglab.com

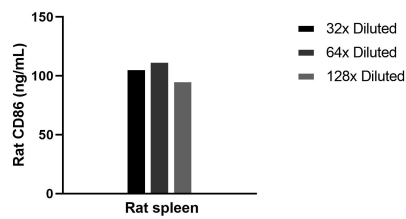
W: ptgcn.com

This product is exclusively available under Proteintech Group brand and is not available to purchase from any other manufacturer.

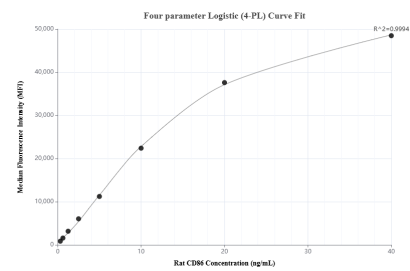
Selected Validation Data



rat spleen tissue was subjected to SDS PAGE followed by western blot with 86252-1-RR (CD86 antibody) at dilution of 1:10000 incubated at room temperature for 1.5 hours. This data was developed using the same antibody clone with 86252-1-PBS in a different storage buffer formulation.



The mean CD86 concentration was determined to be 105.1 ng/mL in Rat spleen tissue extract based on a 8.8 mg/mL extract load.



Cytometric bead array standard curve of MP02379-1, RAT CD86 Recombinant Matched Antibody Pair, PBS Only. Capture antibody: 86252-2-PBS. Detection antibody: 86252-1-PBS. Standard: Eg3586. Range: 0.312-40 ng/mL.