

For Research Use Only

FKBP1A Recombinant monoclonal antibody, PBS Only (Capture)

Catalog Number: 86249-1-PBS



Basic Information

Catalog Number:

86249-1-PBS

Source:

Rabbit

Isotype:

IgG

Immunogen Catalog Number:

AG0406

GenBank Accession Number:

BC001925

GeneID (NCBI):

2280

UNIPROT ID:

P62942

Full Name:

FK506 binding protein 1A, 12kDa

Calculated MW:

12 kDa

Observed MW:

15 kDa

Purification Method:

Protein A purification

CloneNo.:

250923G12

Applications

Tested Applications:

WB, Sandwich ELISA, Indirect ELISA

Species Specificity:

human, mouse, rat

Background Information

FKBP1A(FK506-binding protein 1A) is also named as FKBP1, FKBP12 and belongs to the FKBP-type PPIase family. It keeps in an inactive conformation TGFBR1, the TGF-beta type I serine/threonine kinase receptor, preventing TGF-beta receptor activation in absence of ligand and catalyzes the cis-trans isomerization of proline imidic peptide bonds in oligopeptides.

Storage

Storage:

Store at -80°C.

The product is shipped with ice packs. Upon receipt, store it immediately at -80°C

Storage Buffer:

PBS only, pH7.3

For technical support and original validation data for this product please contact:

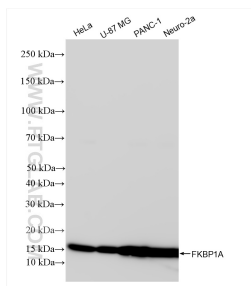
T: 4006900926

E: Proteintech-CN@ptglab.com

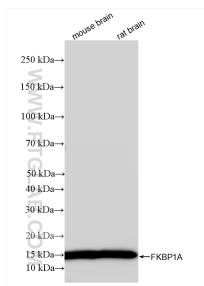
W: ptgcn.com

This product is exclusively available under Proteintech Group brand and is not available to purchase from any other manufacturer.

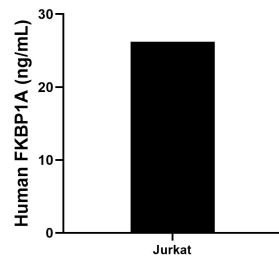
Selected Validation Data



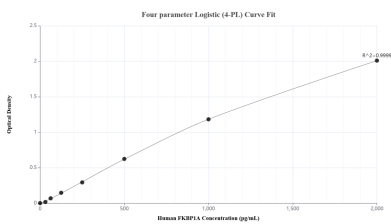
Various lysates were subjected to SDS PAGE followed by western blot with 86249-1-RR (FKBP1A antibody) at dilution of 1:20000 incubated at room temperature for 1.5 hours. This data was developed using the same antibody clone with 86249-1-PBS in a different storage buffer formulation.



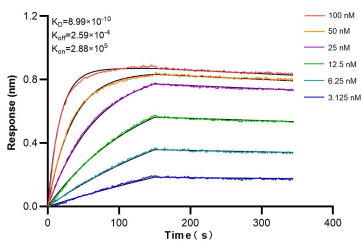
Various lysates were subjected to SDS PAGE followed by western blot with 86249-1-RR (FKBP1A antibody) at dilution of 1:20000 incubated at room temperature for 1.5 hours. This data was developed using the same antibody clone with 86249-1-PBS in a different storage buffer formulation.



The mean FKBP1A concentration was determined to be 26.2 ng/mL in Jurkat cell extract based on a 1.2 mg/mL extract load.



Sandwich ELISA standard curve of MP02313-2, Human FKBP1A Recombinant Matched Antibody Pair - PBS only. 86249-1-PBS was coated to a plate as the capture antibody and incubated with serial dilutions of standard Ag0406. 86249-4-PBS was HRP conjugated as the detection antibody. Range: 31.3-2000 pg/mL



Biolayer interferometry (BLI) kinetic assays of 86249-1-RR against Human FKBP1A were performed. The affinity constant is 0.899 nM.