

For Research Use Only

# BAG5 Recombinant antibody, PBS Only (Capture)

Catalog Number: 86248-3-PBS



## Basic Information

Catalog Number:

86248-3-PBS

Concentration:

1 mg/ml

Source:

Rabbit

Isotype:

IgG

Immunogen Catalog Number:

AG24320

GenBank Accession Number:

BC044216

GeneID (NCBI):

9529

UNIPROT ID:

Q9UL15

Full Name:

BCL2-associated athanogene 5

Calculated MW:

51 kDa

Purification Method:

Protein A purification

CloneNo.:

250877A9

## Applications

Tested Applications:

Cytometric bead array, Indirect ELISA, Sample test

Species Specificity:

human

## Background Information

### Storage

Storage:

Store at -80°C.

The product is shipped with ice packs. Upon receipt, store it immediately at -80°C

Storage Buffer:

PBS only, pH7.3

For technical support and original validation data for this product please contact:

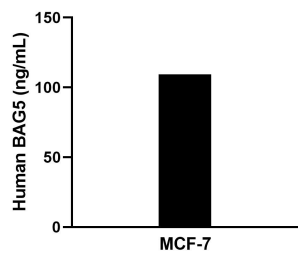
T: 4006900926

E: [Proteintech-CN@ptglab.com](mailto:Proteintech-CN@ptglab.com)

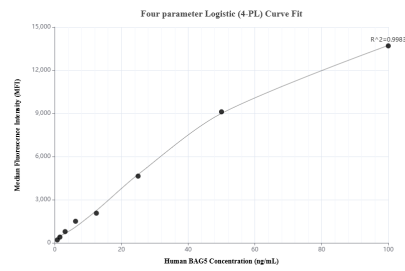
W: [ptgcn.com](http://ptgcn.com)

This product is exclusively available under Proteintech Group brand and is not available to purchase from any other manufacturer.

## Selected Validation Data



The mean BAG5 concentration was determined to be 110.8 ng/mL in MCF-7 cell extract based on a 1.2 mg/mL extract load.



Cytometric bead array standard curve of MP02328-1, BAG5 Recombinant Matched Antibody Pair, PBS Only. Capture antibody: 86248-3-PBS. Detection antibody: 86248-2-PBS. Standard: Ag24320. Range: 0.781-100 ng/mL