

For Research Use Only

# Pancreatic alpha-amylase Recombinant antibody, PBS Only (Capture)

Catalog Number: 86243-1-PBS



## Basic Information

Catalog Number:	86243-1-PBS	GenBank Accession Number:	NM_000699.4	Purification Method:	Protein A purification
Concentration:	1000 µg/ml	GeneID (NCBI):	279	CloneNo.:	250679H5
Source:	Rabbit	UNIPROT ID:	P04746-1		
Isotype:	IgG	Full Name:	amylase, alpha 2A (pancreatic)		
Immunogen Catalog Number:	EG3071	Calculated MW:	58 kDa		
		Observed MW:	58-60 kDa		

## Applications

**Tested Applications:**  
WB, Sandwich ELISA, Indirect ELISA, Sample test

**Species Specificity:**  
human

## Background Information

### Storage

**Storage:**  
Store at -80°C.  
**The product is shipped with ice packs. Upon receipt, store it immediately at -80°C**

**Storage Buffer:**  
PBS only, pH7.3

For technical support and original validation data for this product please contact:

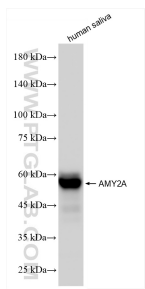
T: 4006900926

E: [Proteintech-CN@ptglab.com](mailto:Proteintech-CN@ptglab.com)

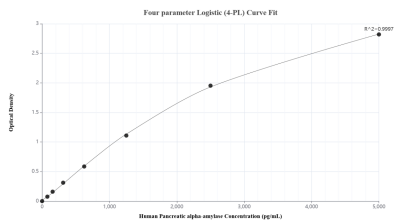
W: [ptgcn.com](http://ptgcn.com)

**This product is exclusively available under Proteintech Group brand and is not available to purchase from any other manufacturer.**

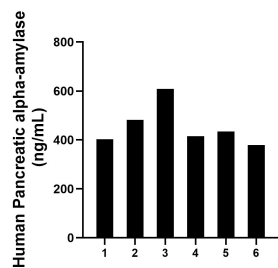
## Selected Validation Data



human saliva were subjected to SDS PAGE followed by western blot with 86243-1-RR (AMY2A antibody) at dilution of 1:10000 incubated at room temperature for 1.5 hours. This data was developed using the same antibody clone with 86243-1-PBS in a different storage buffer formulation.



Sandwich ELISA standard curve of MP02585-1, Human Pancreatic alpha-amylase Recombinant Matched Antibody Pair - PBS only. 86243-1-PBS was coated to a plate as the capture antibody and incubated with serial dilutions of standard Eg3071. 86243-2-PBS was HRP conjugated as the detection antibody. Range: 78.1-5000 pg/mL



Serum of six individual healthy human donors was measured. The Pancreatic alpha-amylase concentration of detected samples was determined to be 453.6 ng/mL with a range of 379.0-609.0 ng/mL.